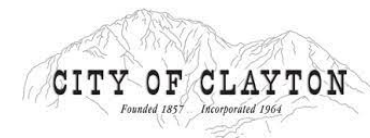


CITY OF CLAYTON SIXTH CYCLE HOUSING ELEMENT

Maptionnaire Survey Results

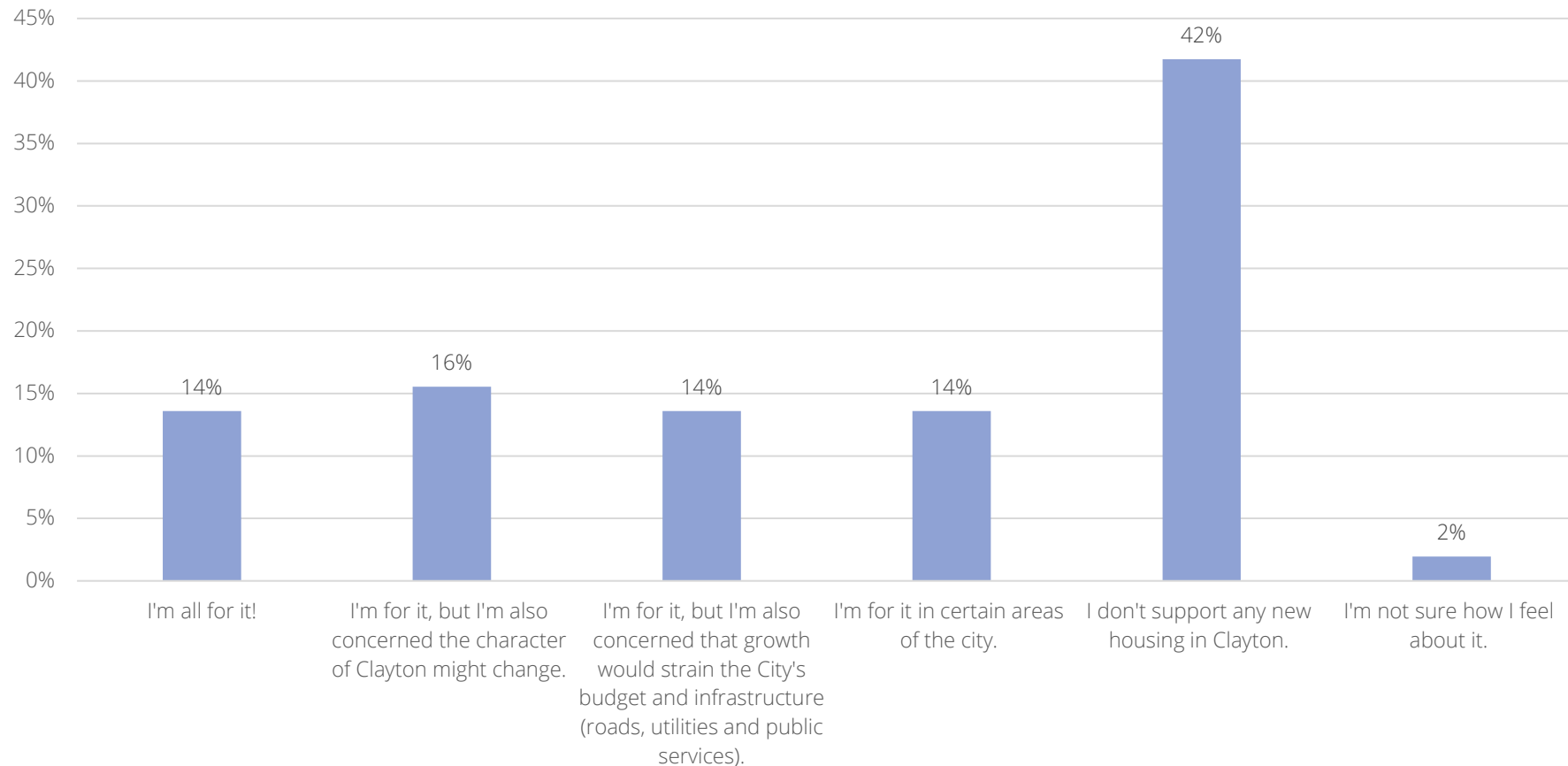
December 21, 2021



**LET'S GET
STARTED!**



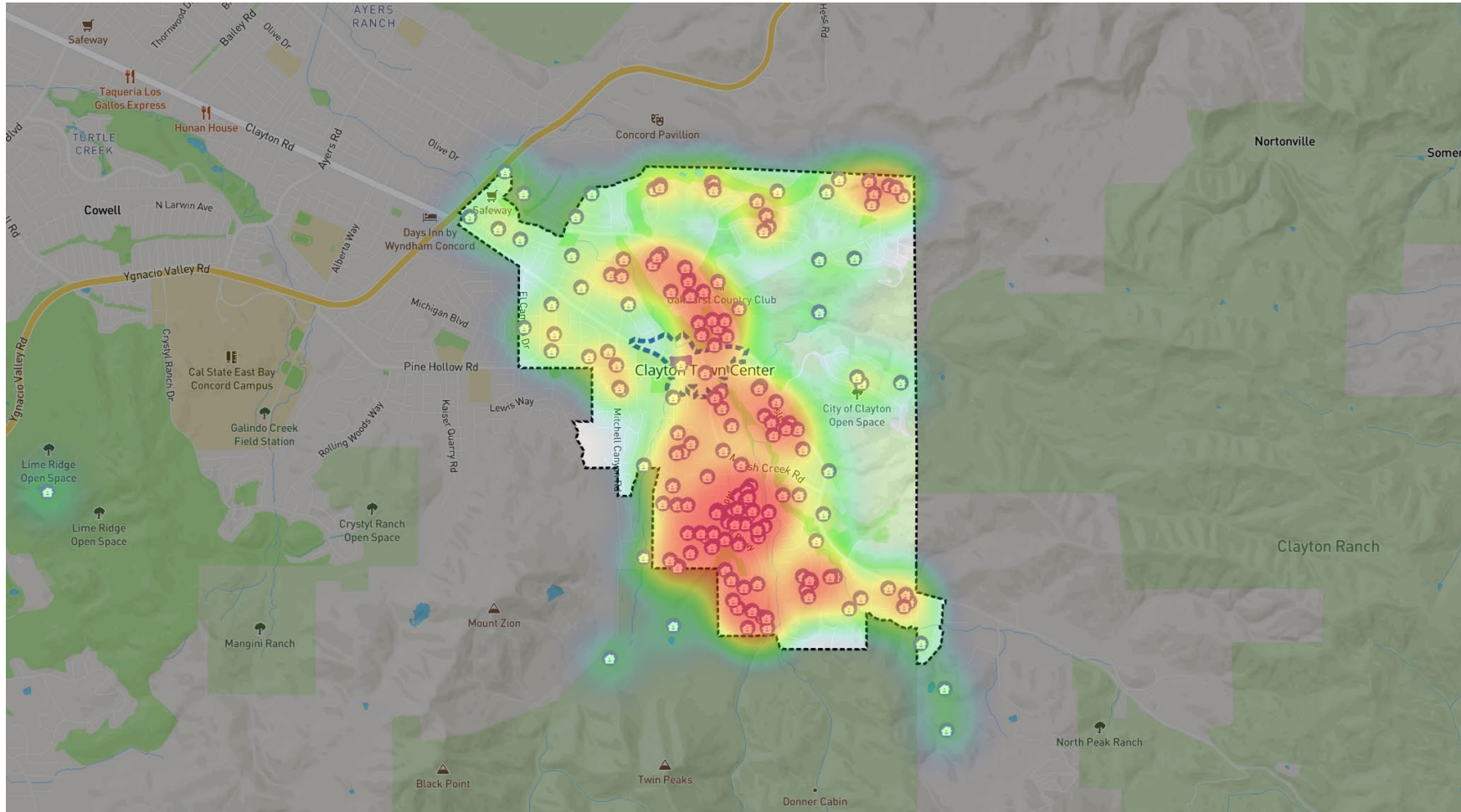
What do you think about the potential growth increase in housing units in Clayton?



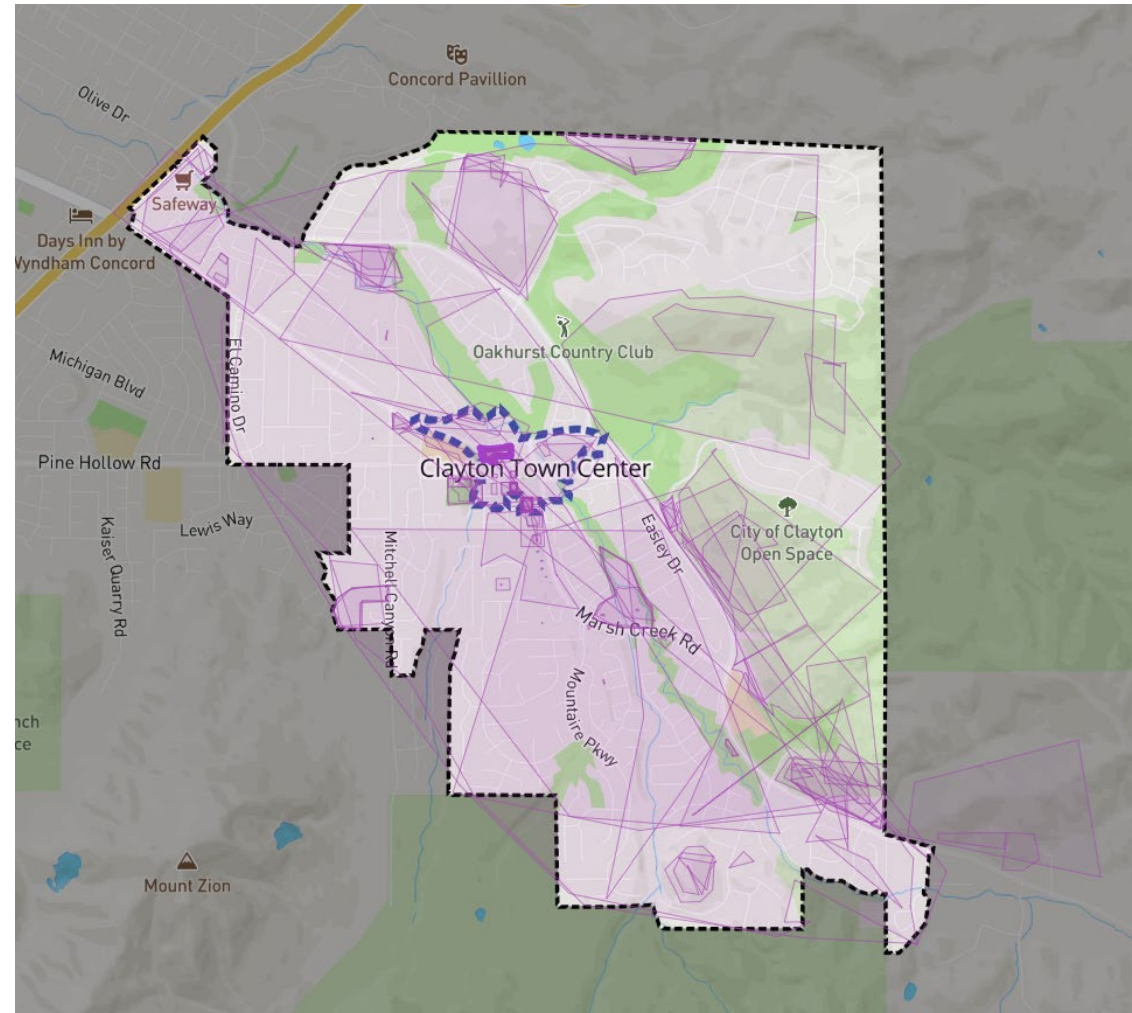
USING THE INTERACTIVE MAP



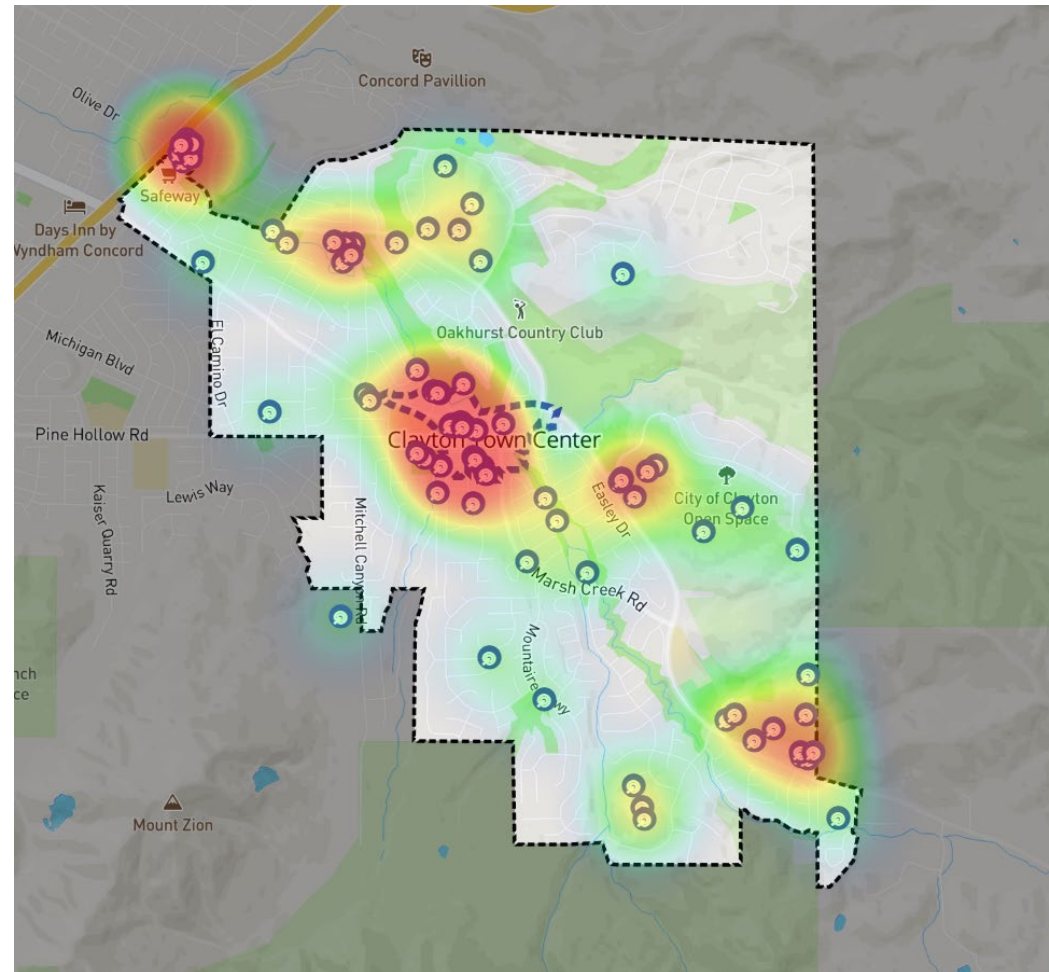
Where do you live?



Areas for New Housing



Sites for New Housing



DOWNTOWN SITE



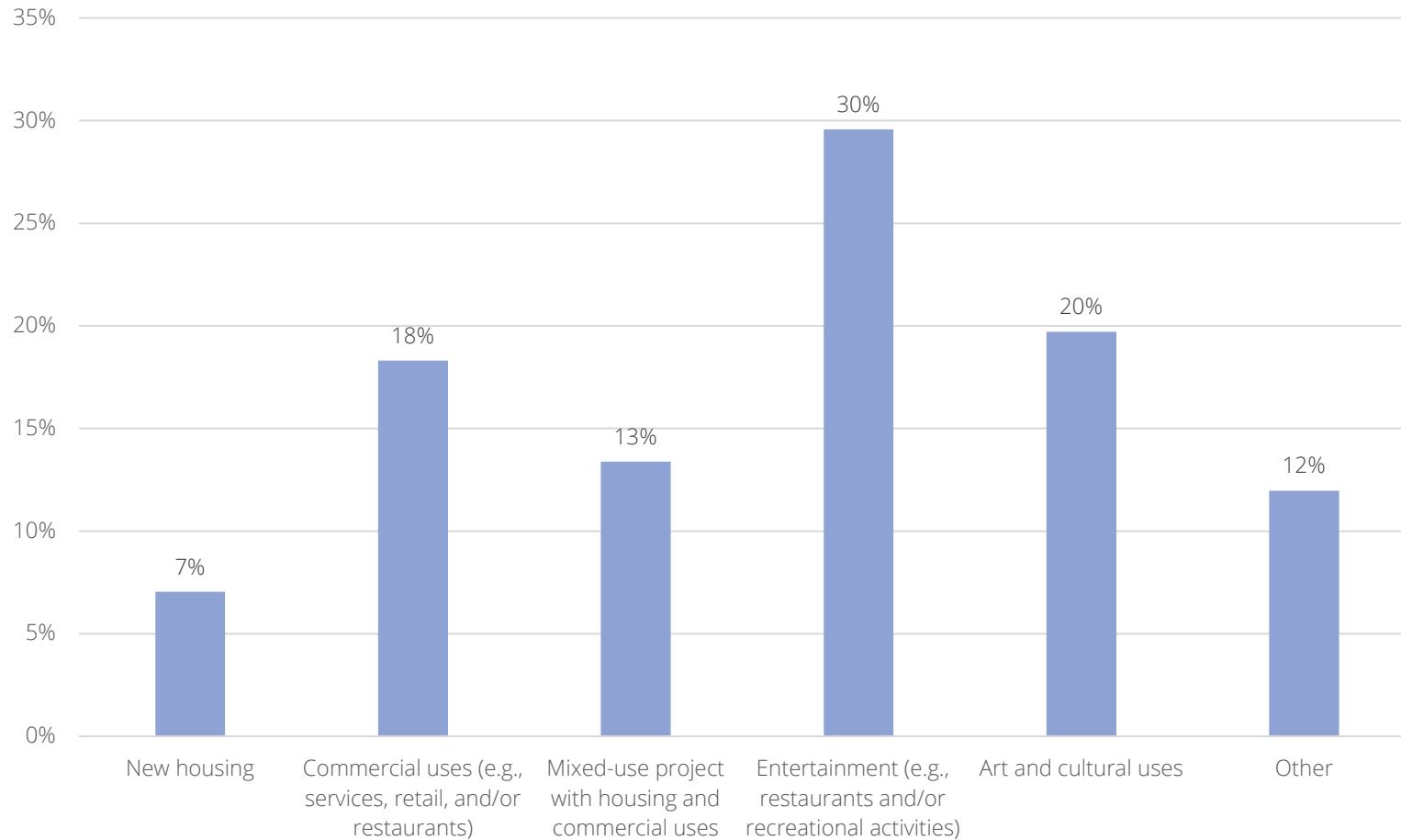
Uploaded Images



Uploaded Images

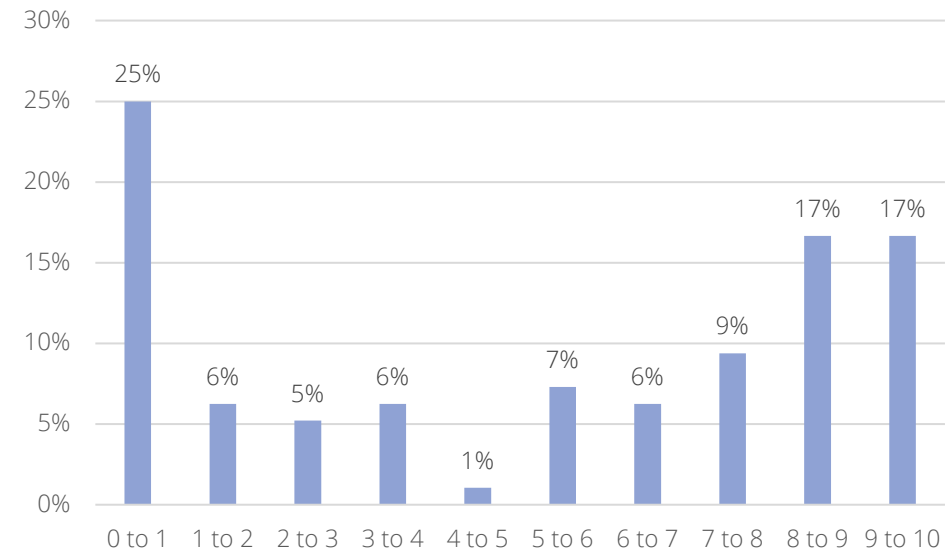


What would you like to see at the Downtown Site? You may select more than one.

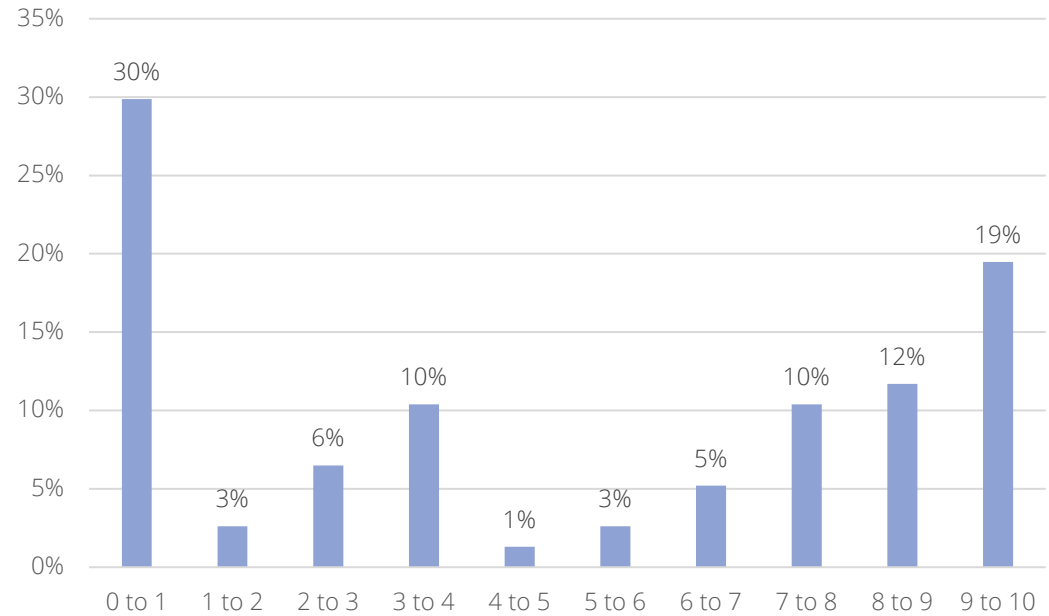


Please indicate your level of support for the following example housing and commercial types for the Downtown Site using the sliders below (0 = I don't support it and 10 = I'm all for it!). The images illustrate potential uses and scale and do not depict the designs of future buildings.

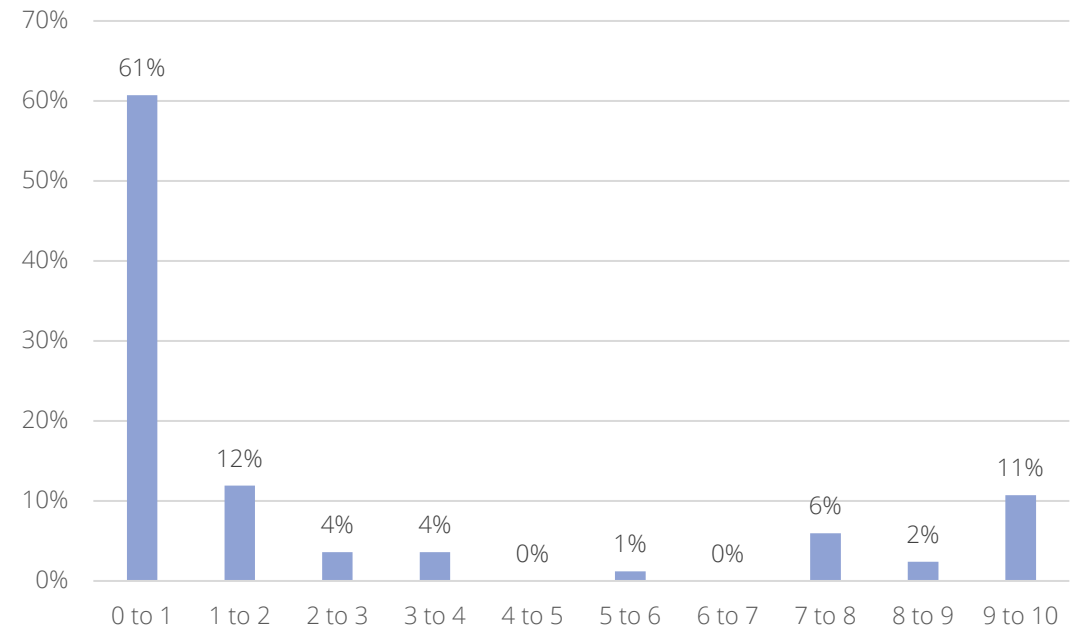
What is your level of support for new duplexes?



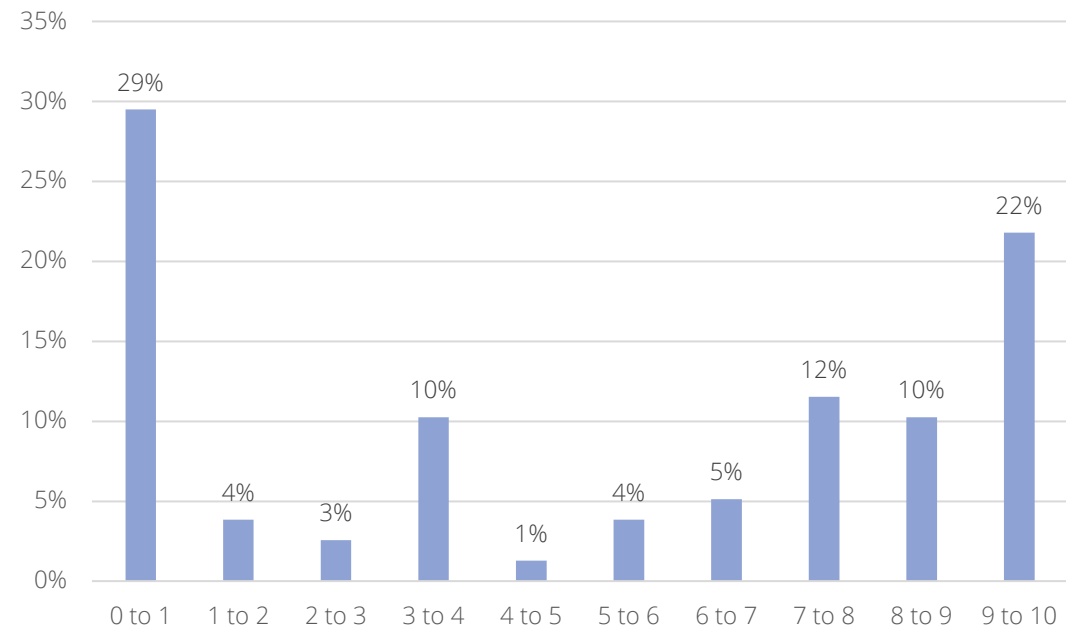
What is your level of support for new townhomes?



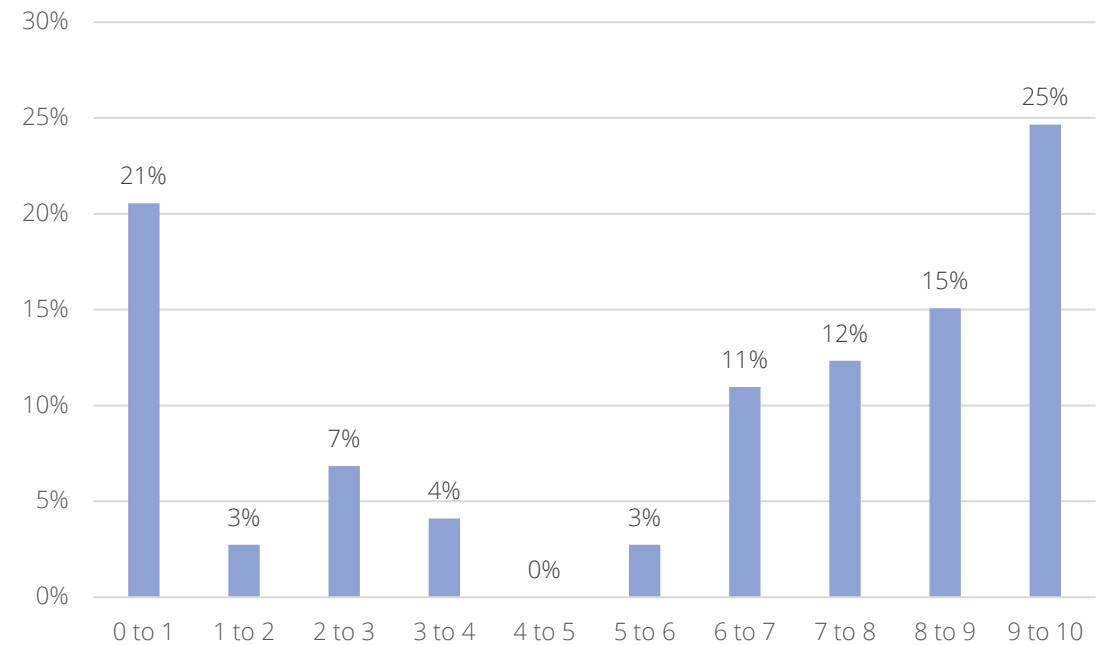
What is your level of support for new apartments/condominiums?



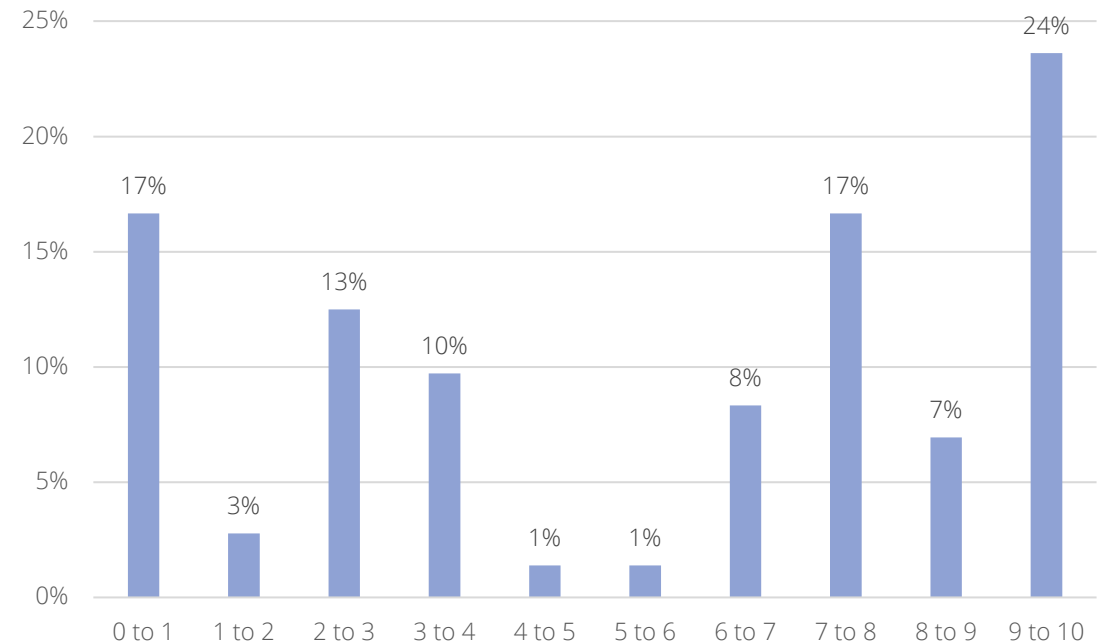
What is your level of support for new mixed-use projects with retail?



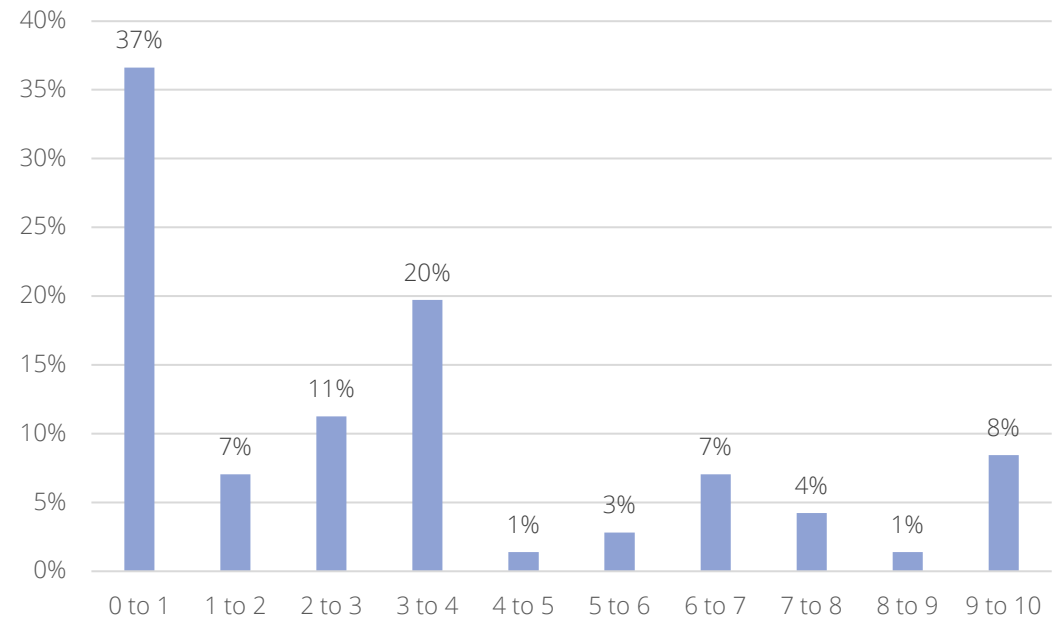
What is your level of support for new mixed-use projects with dining?



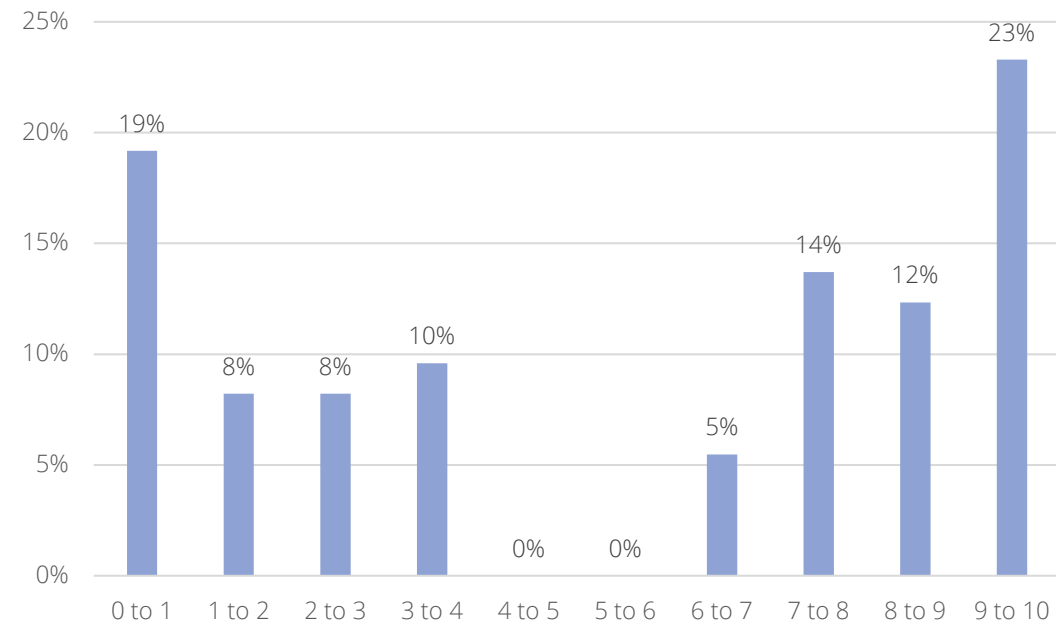
What is your level of support for new retail?



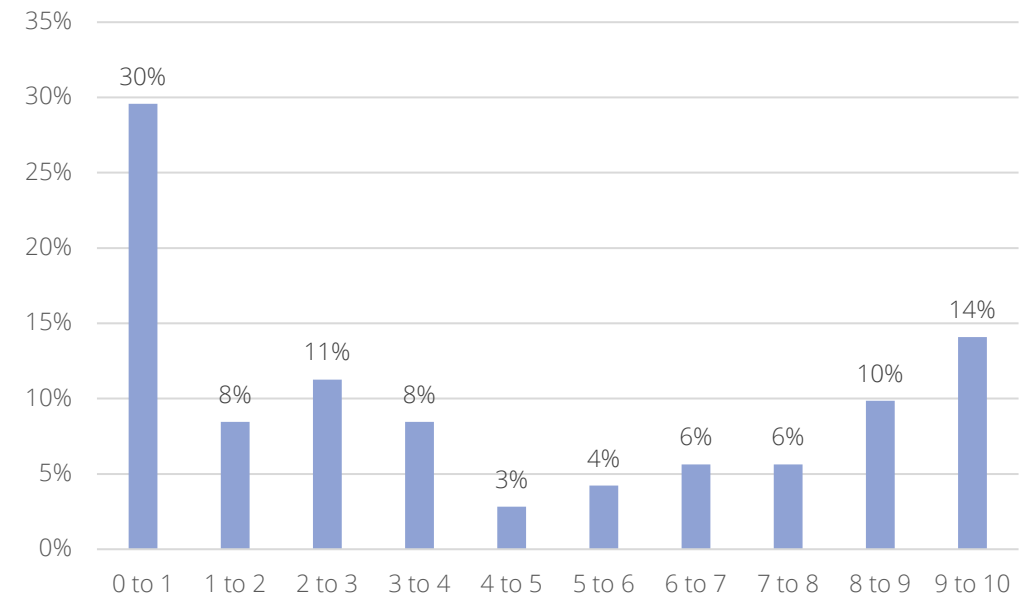
What is your level of support for new commercial (office) spaces?



What is your level of support for new grocery store?



What is your level of support for a new performing arts center?

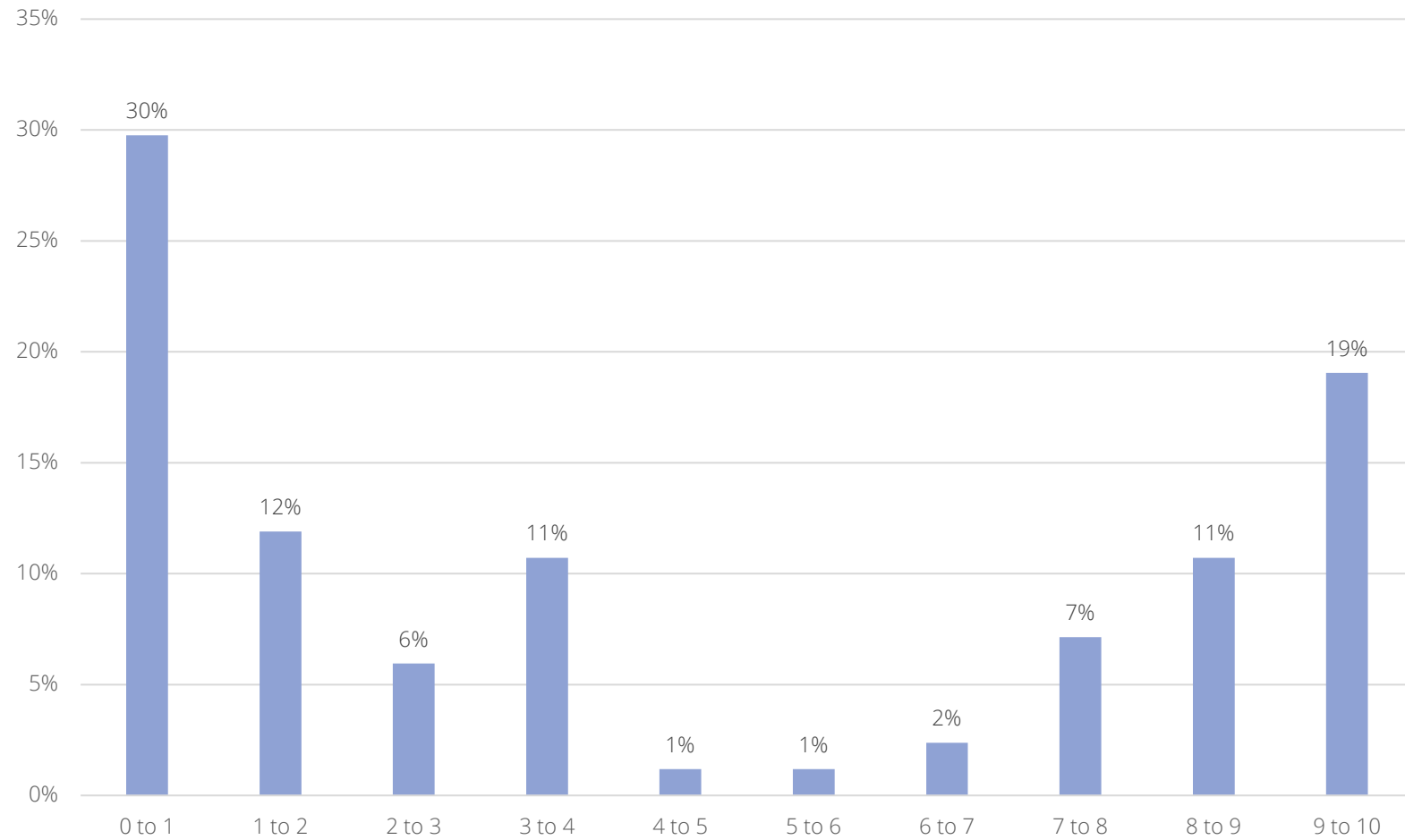


COMMUNITY VISION AND GOALS

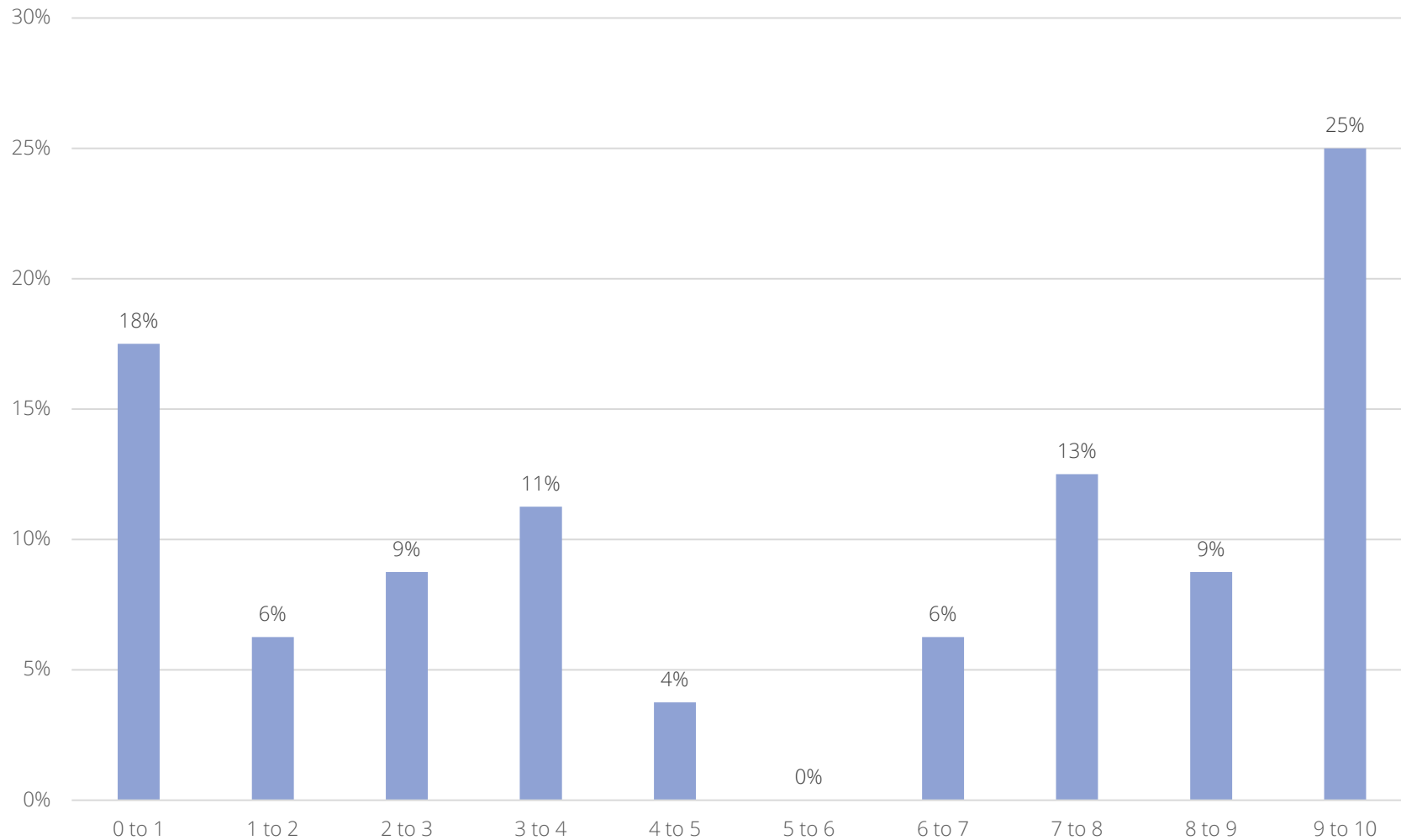


Please indicate the importance of housing issues and challenges in Clayton using the sliders below (0 = Not at all important and 10 = Very important). Click on the slider and leave it at 5 if the item is neither important or unimportant to you.

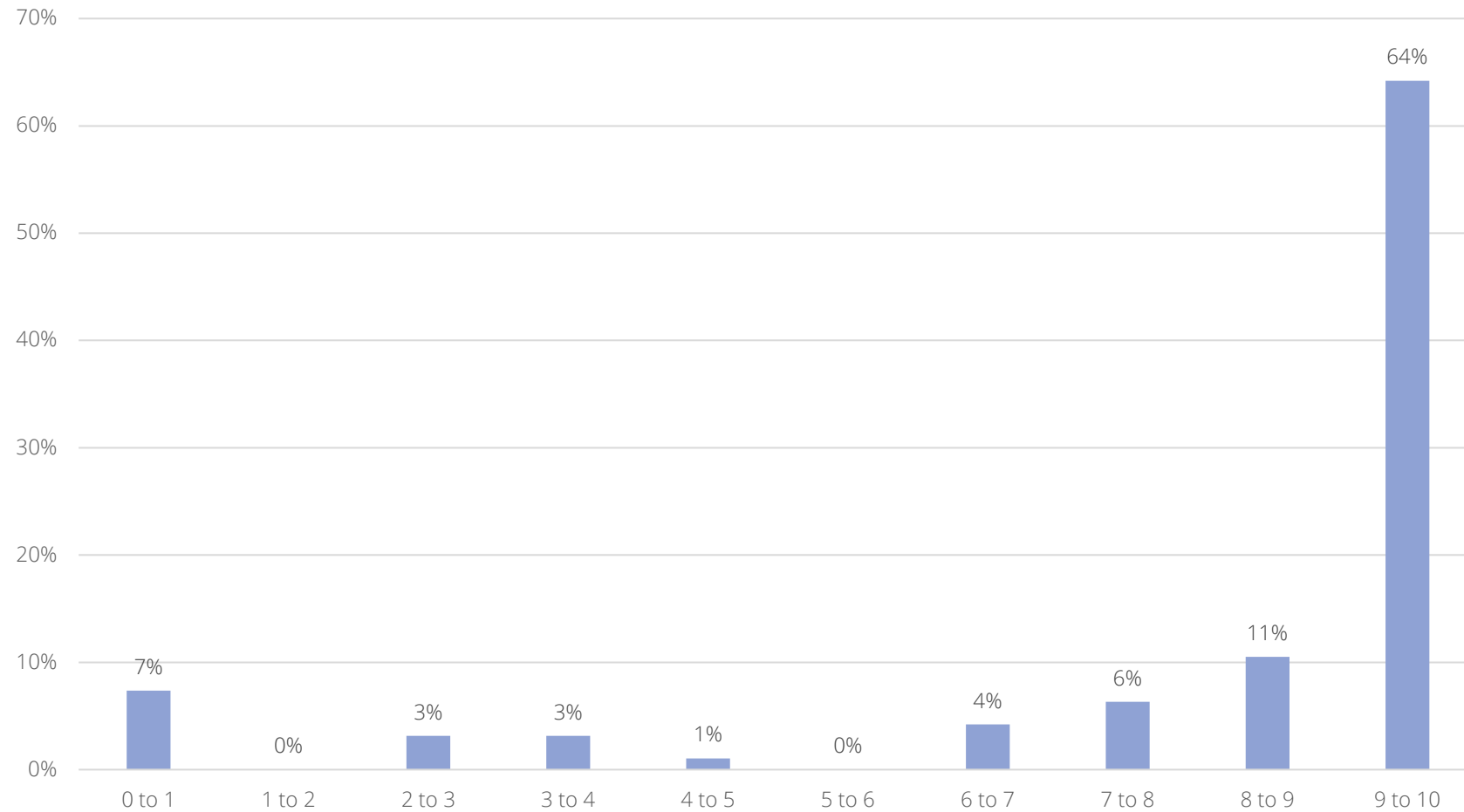
Housing Supply



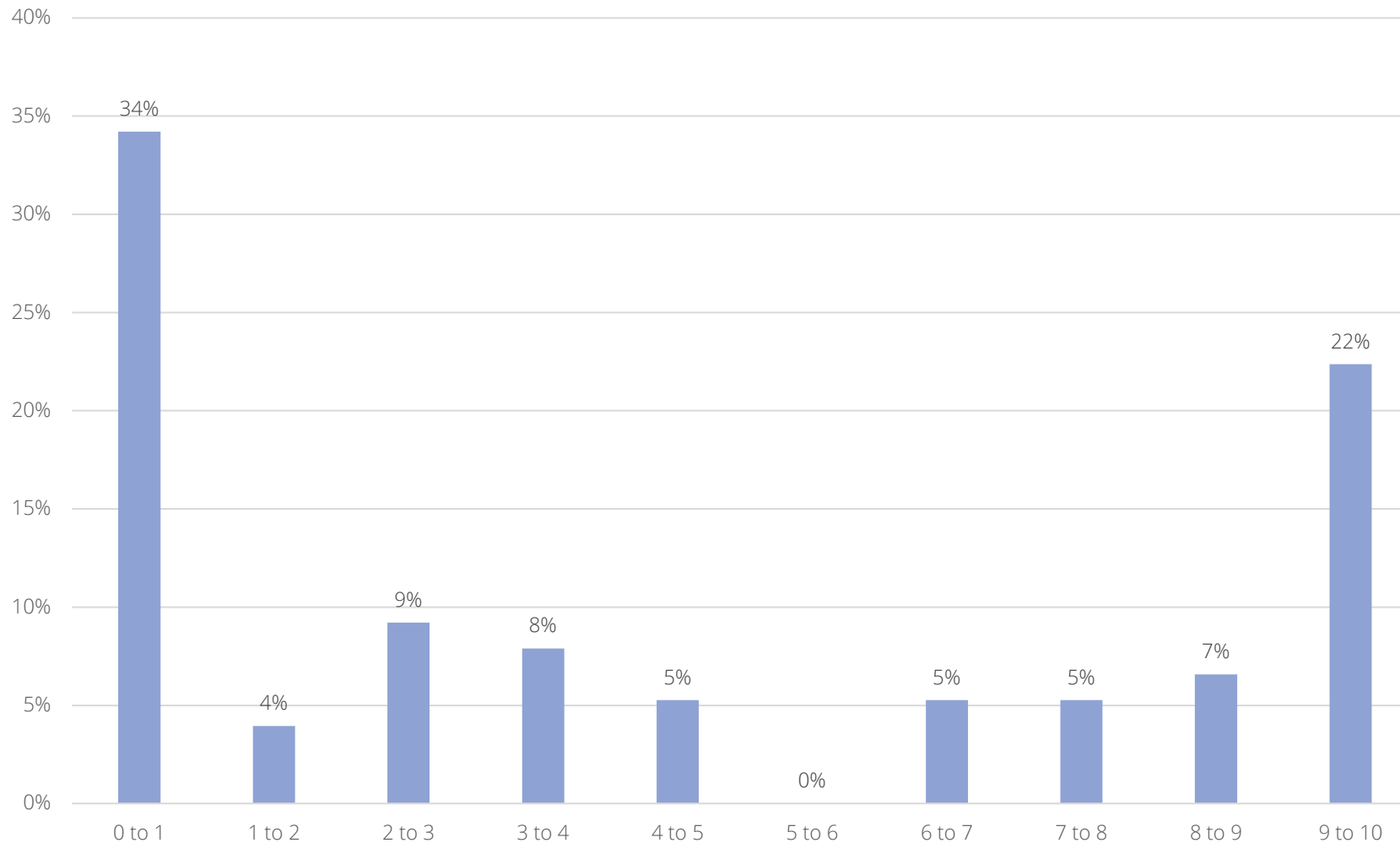
Housing Affordability



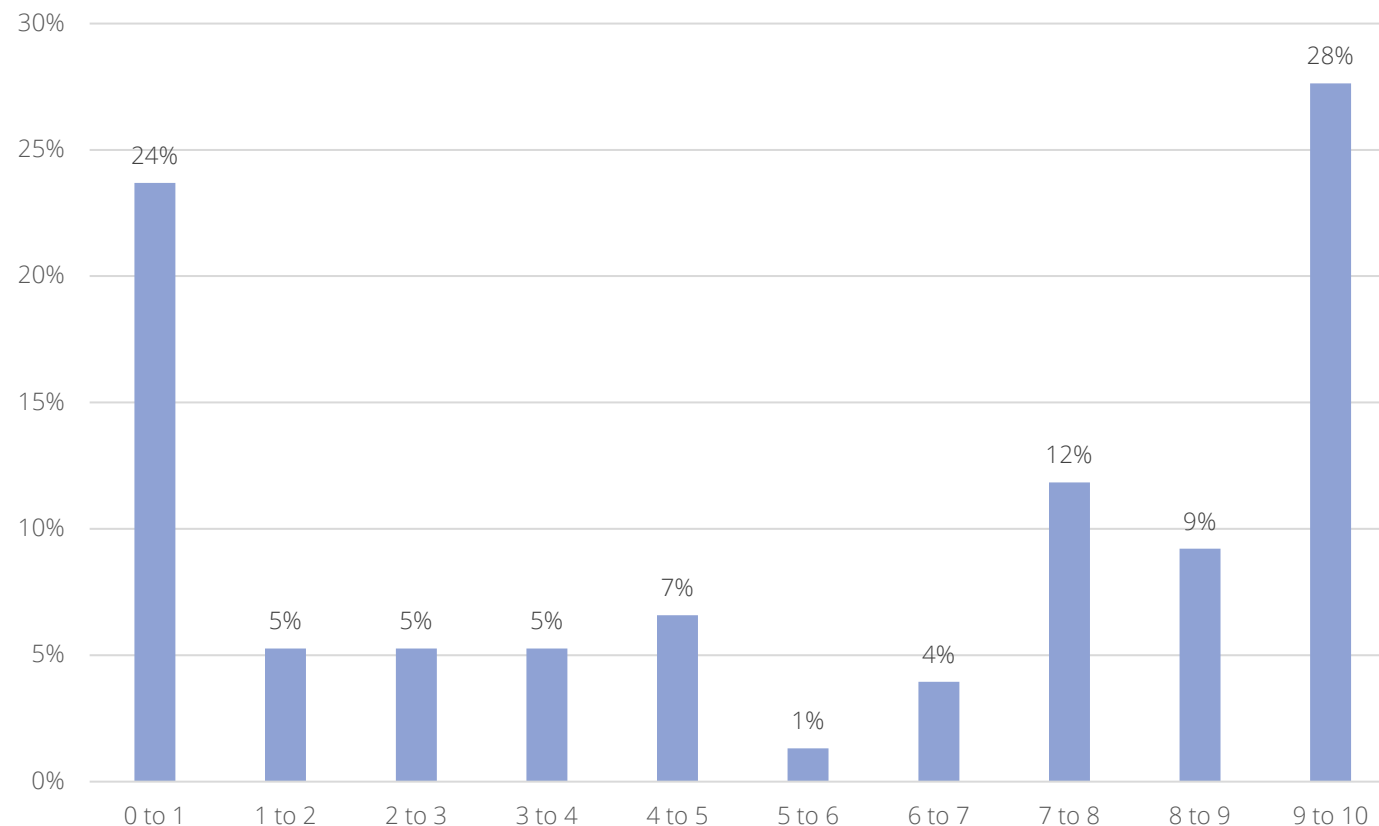
Overcrowding



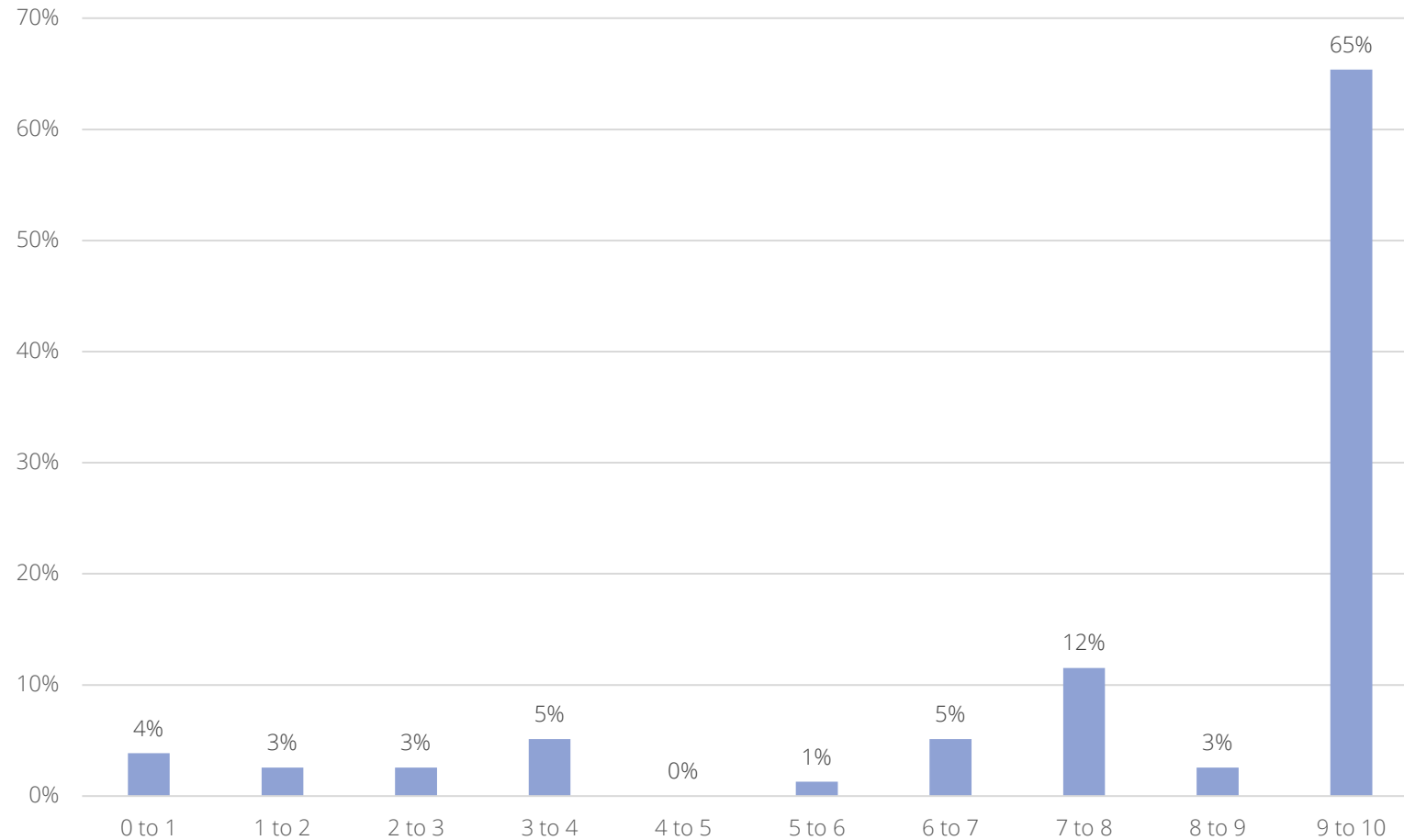
A Lack of Diverse Housing Options



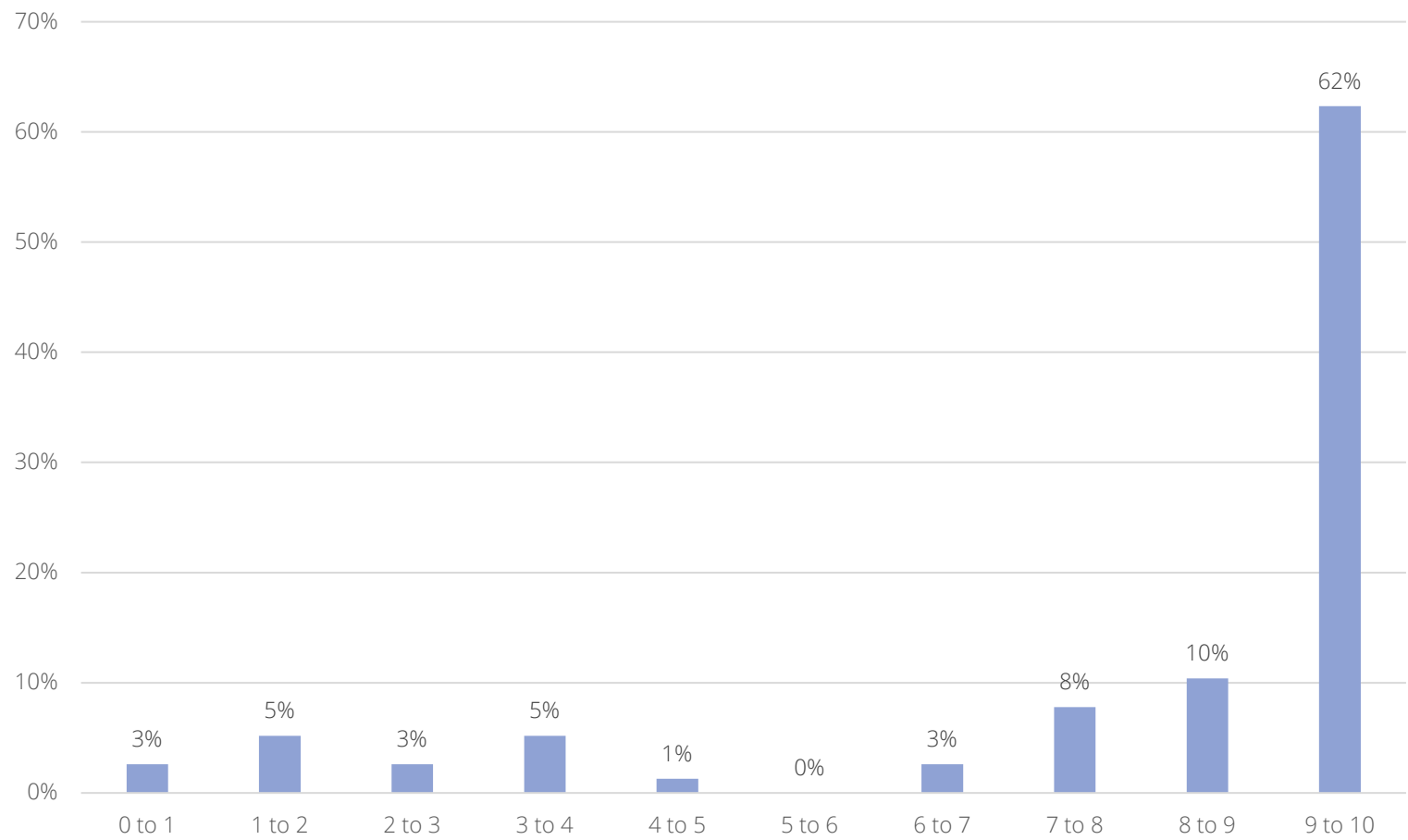
Fair Housing Issues (e.g., discrimination, inadequate accommodations for people with disabilities, etc.)



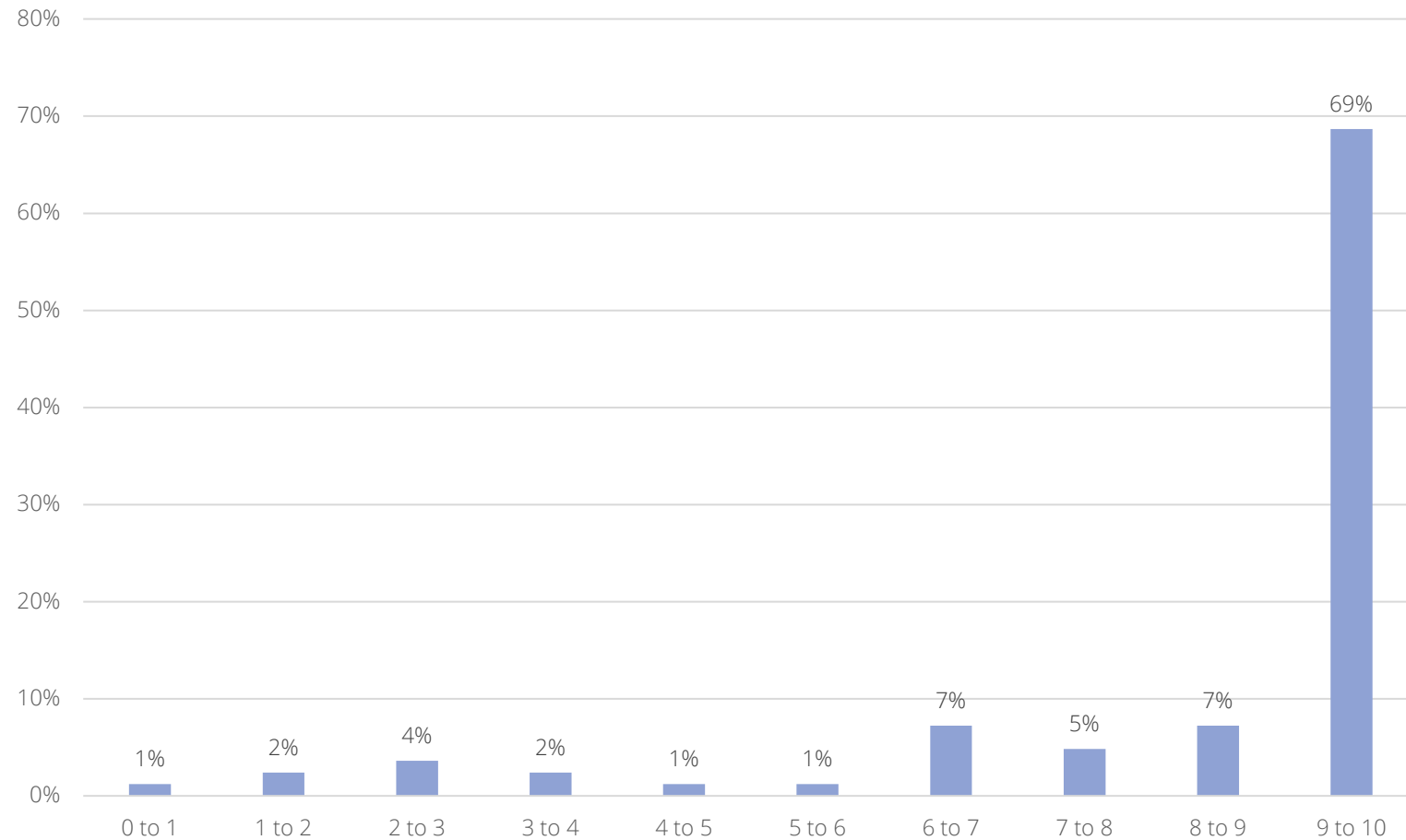
Limited Infrastructure (water, sewer)



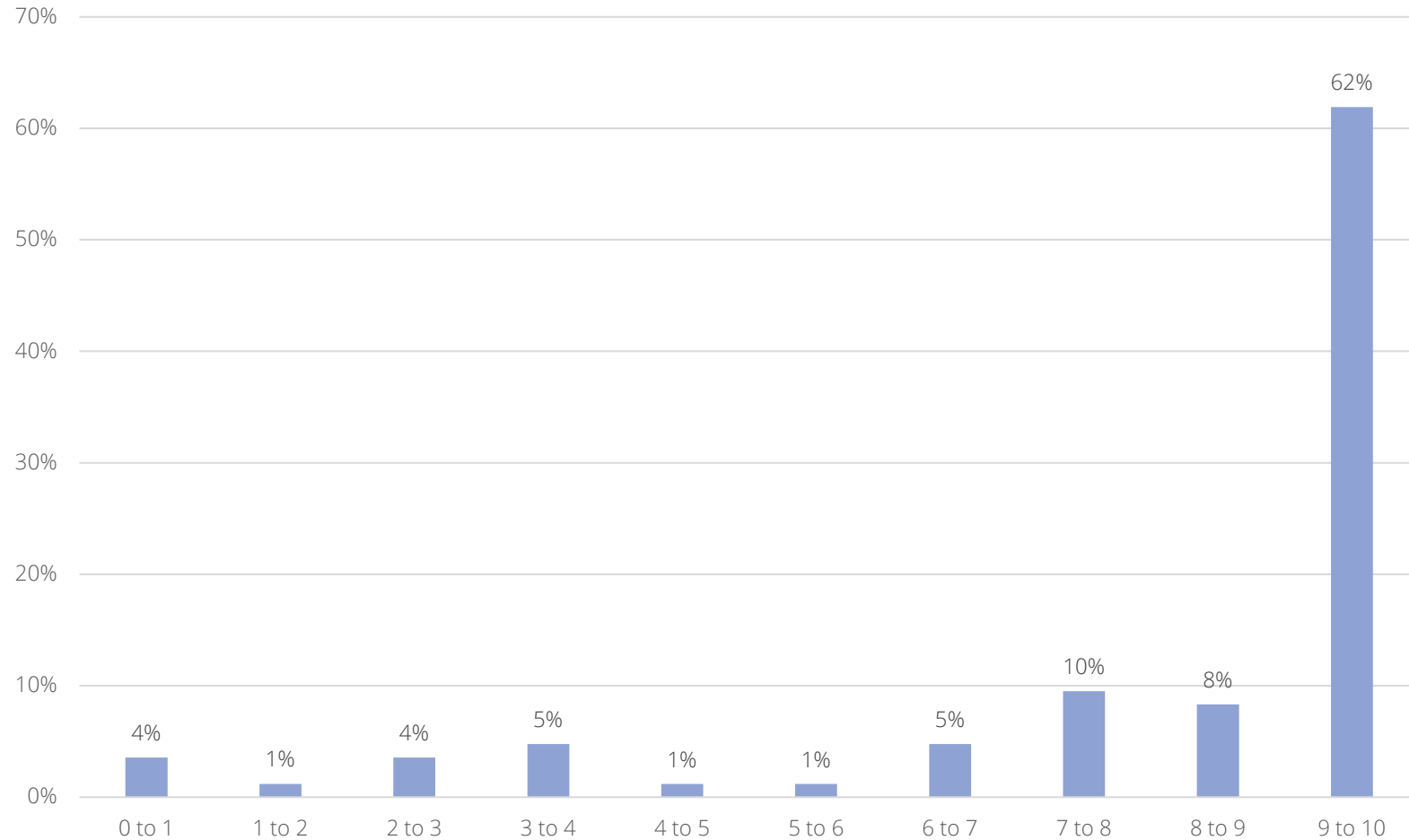
Wildfire Risk



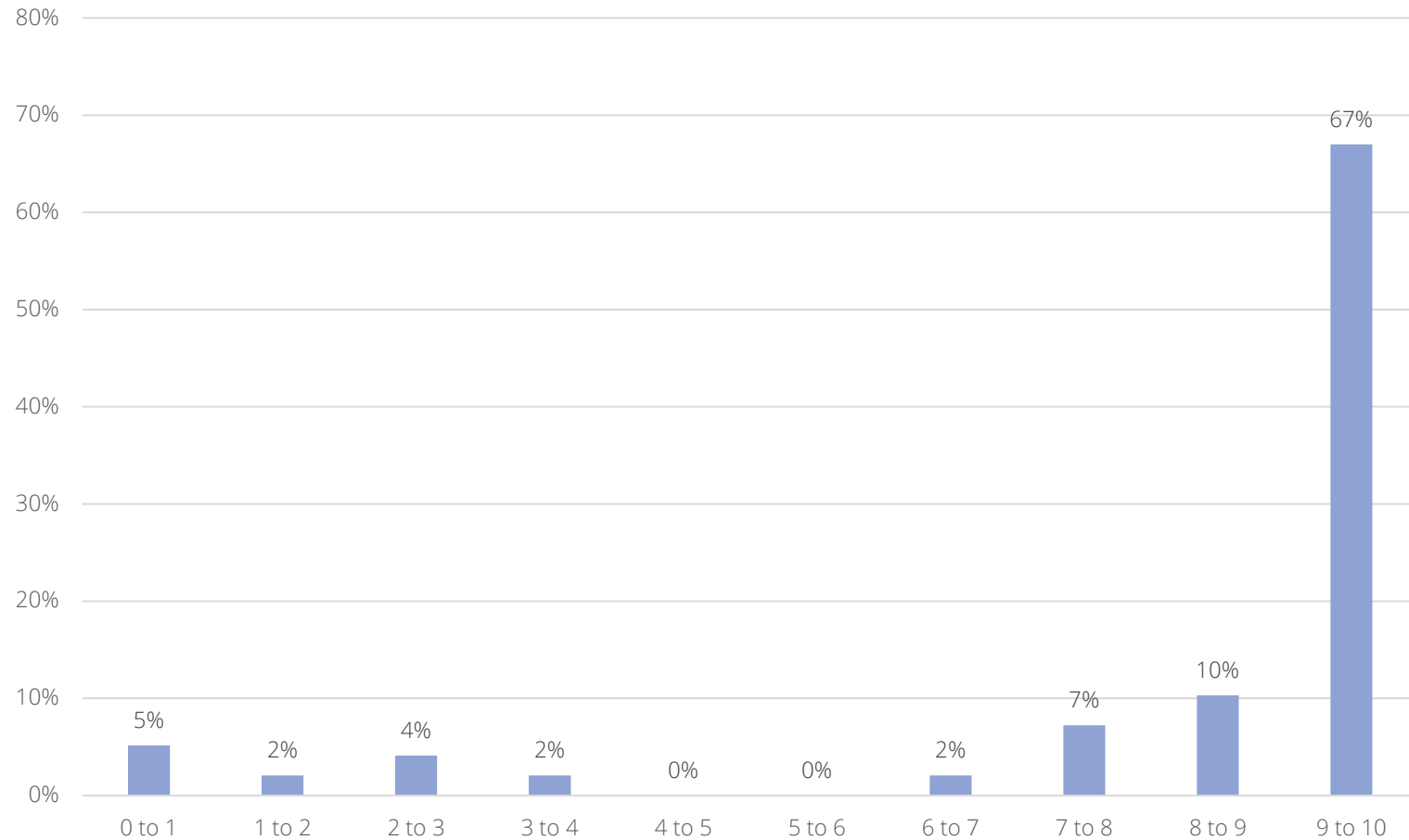
Traffic and Congestion



Protecting Environmentally Sensitive Areas

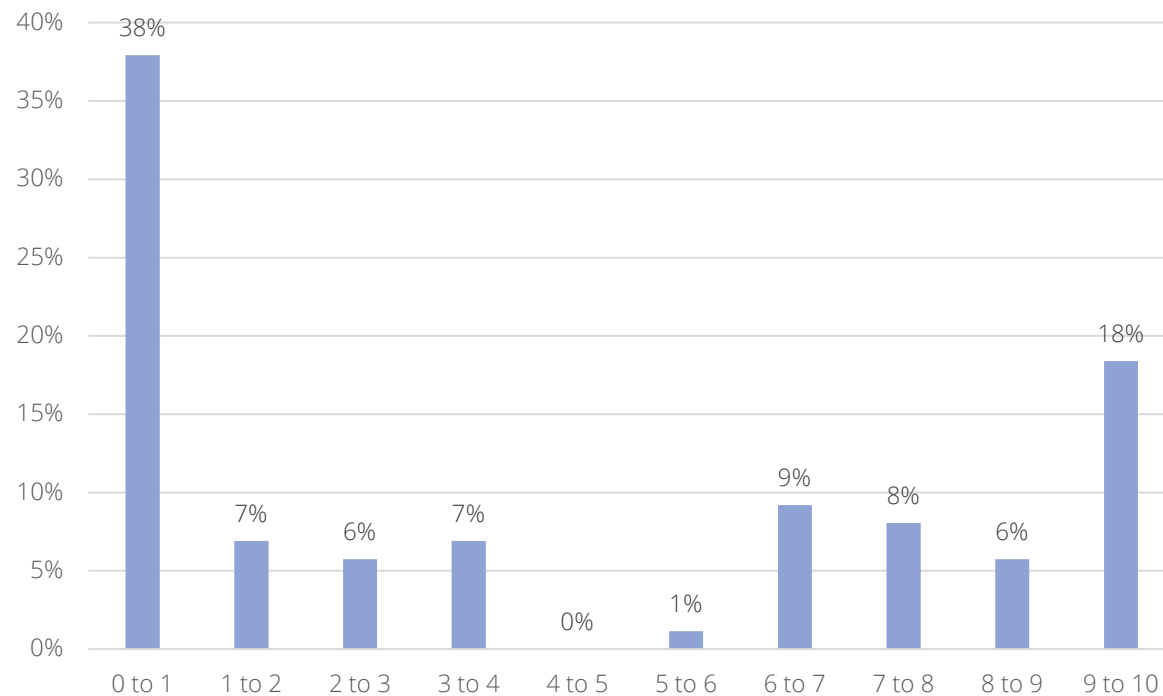


Preserving Community Character

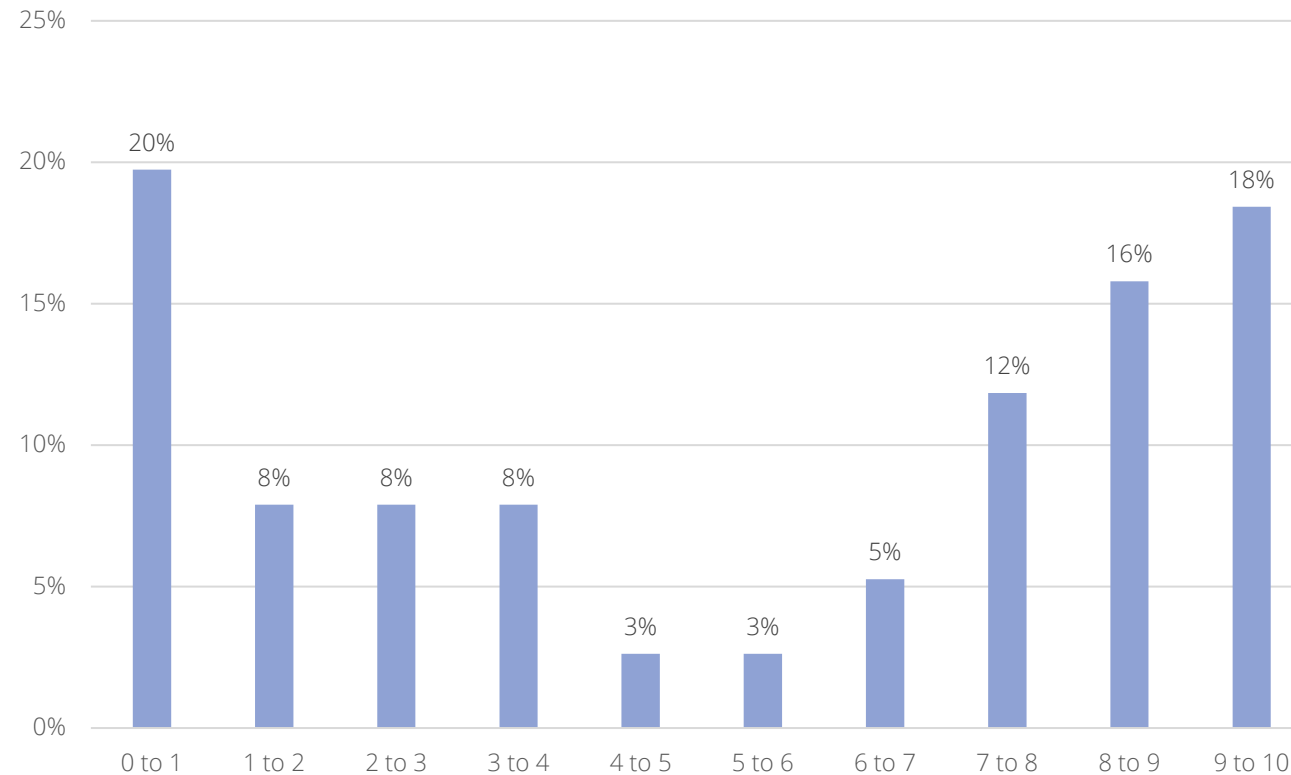


What strategies of solutions do you think are appropriate for Clayton? Drag the slider left or right to indicate your level of support (0 = Not at all important and 10 = Very important). Click on the slider and leave it at 5 if the item is neither important or unimportant to you.

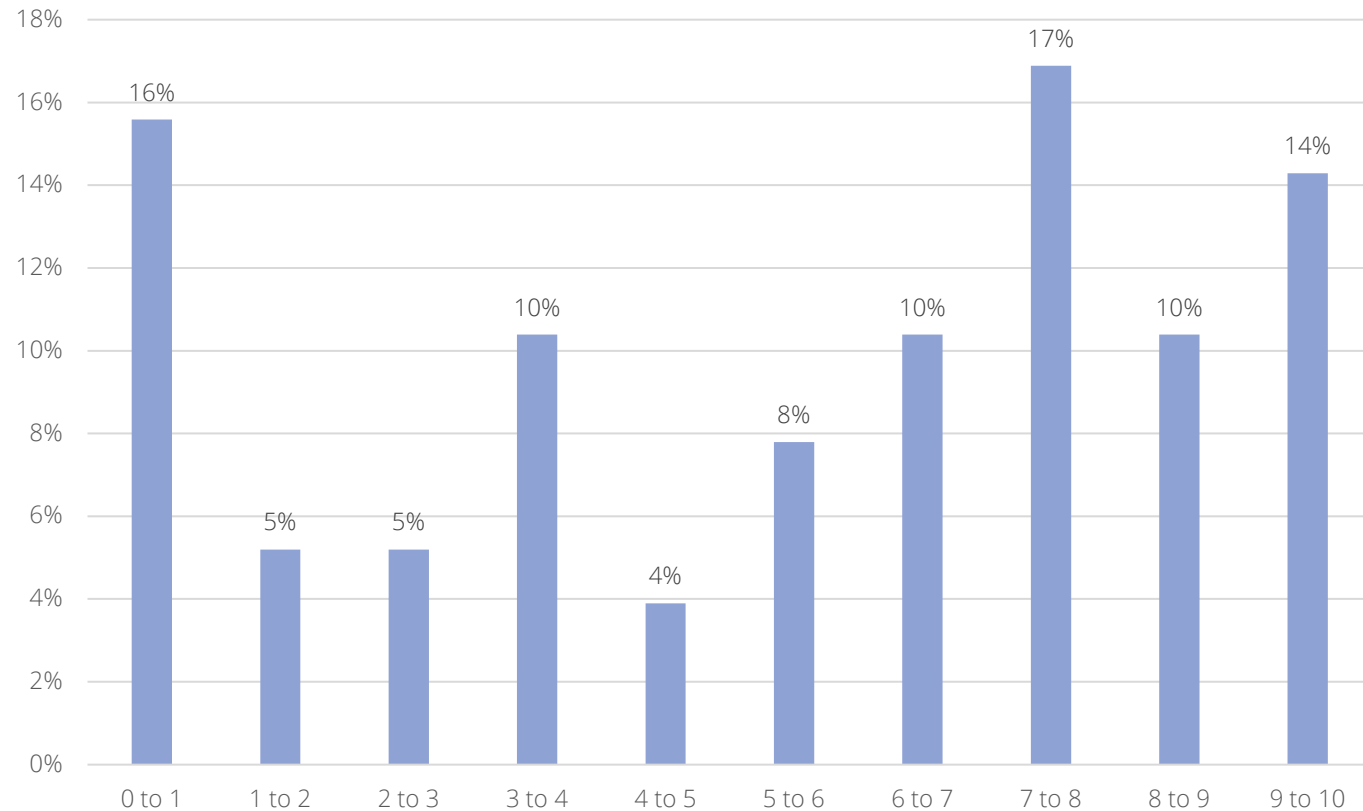
Develop a diverse range of housing options (e.g., apartments, condominiums, duplexes/triplexes/fourplexes, Accessory Dwelling Units/in-law units, etc.)



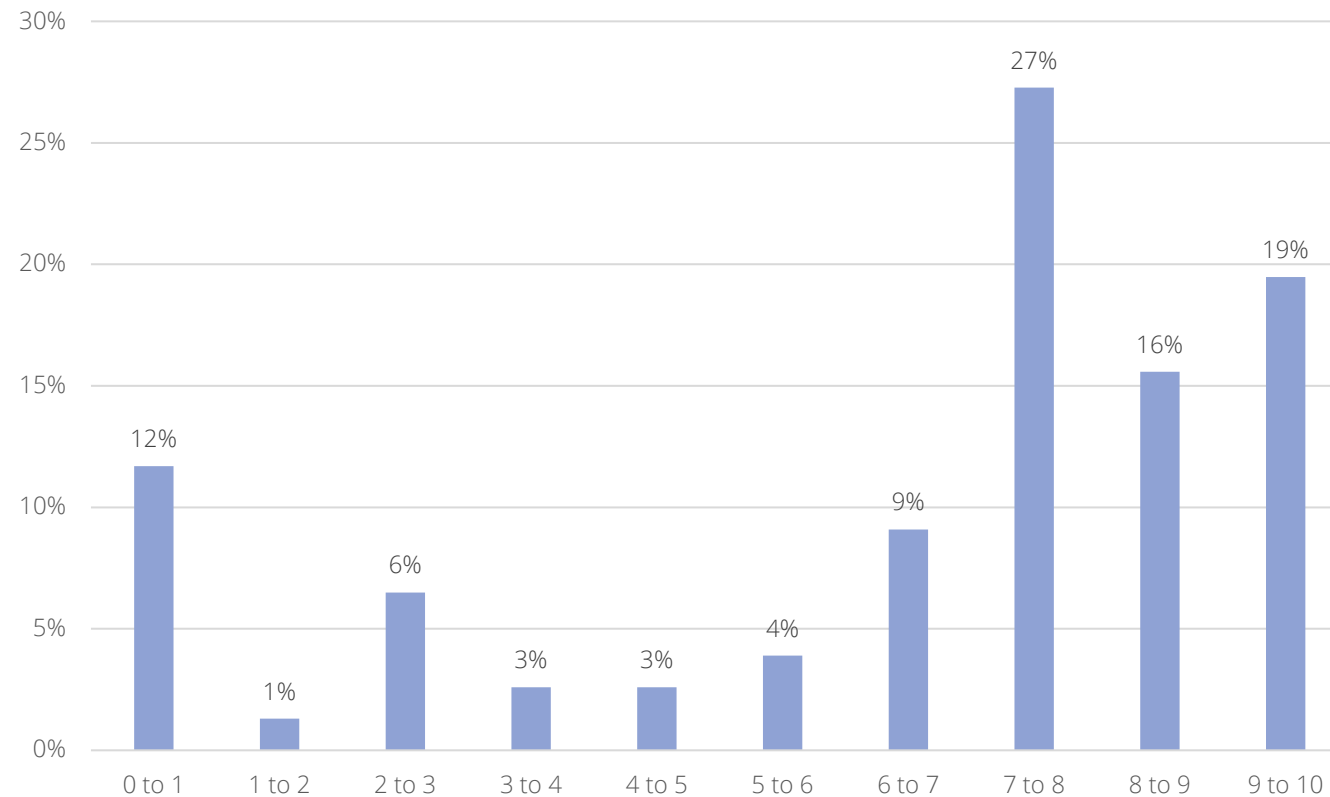
Ensure that children who grow up in Clayton can afford to live in Clayton on their own



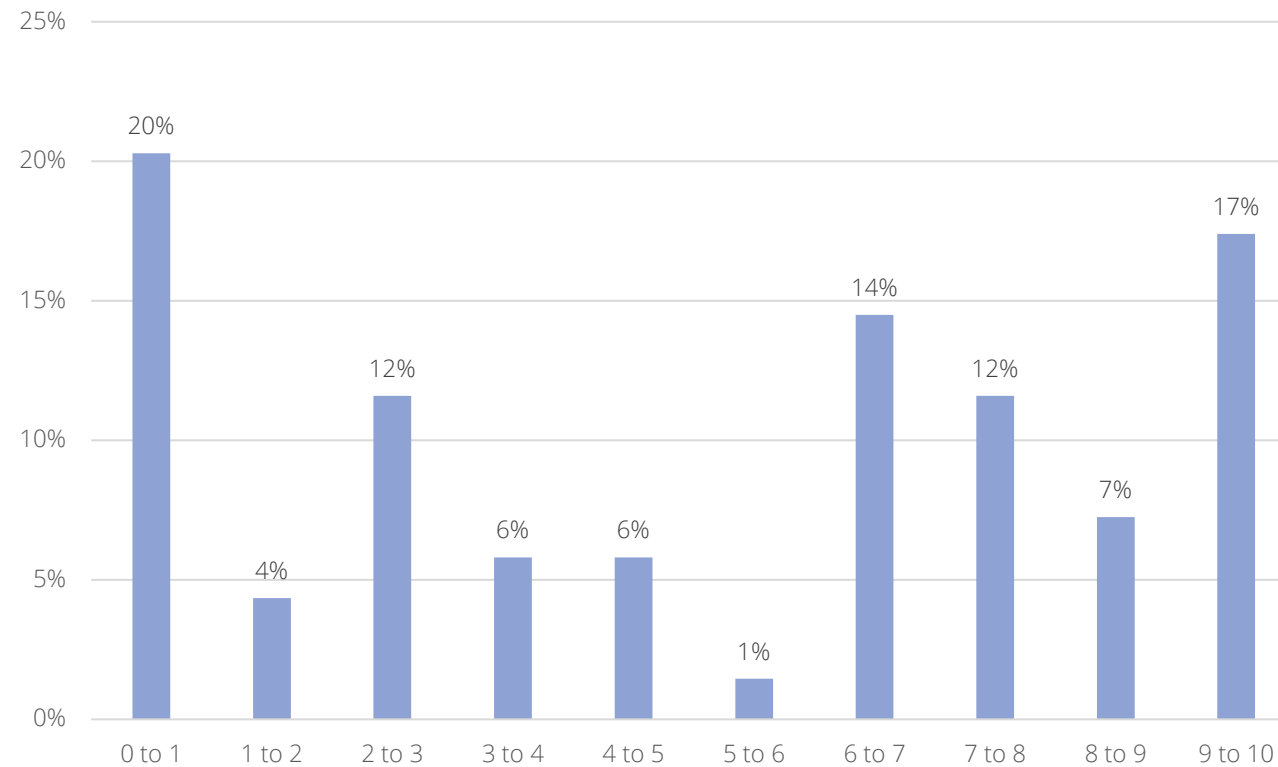
Provide opportunities for people who work in Clayton to live in Clayton



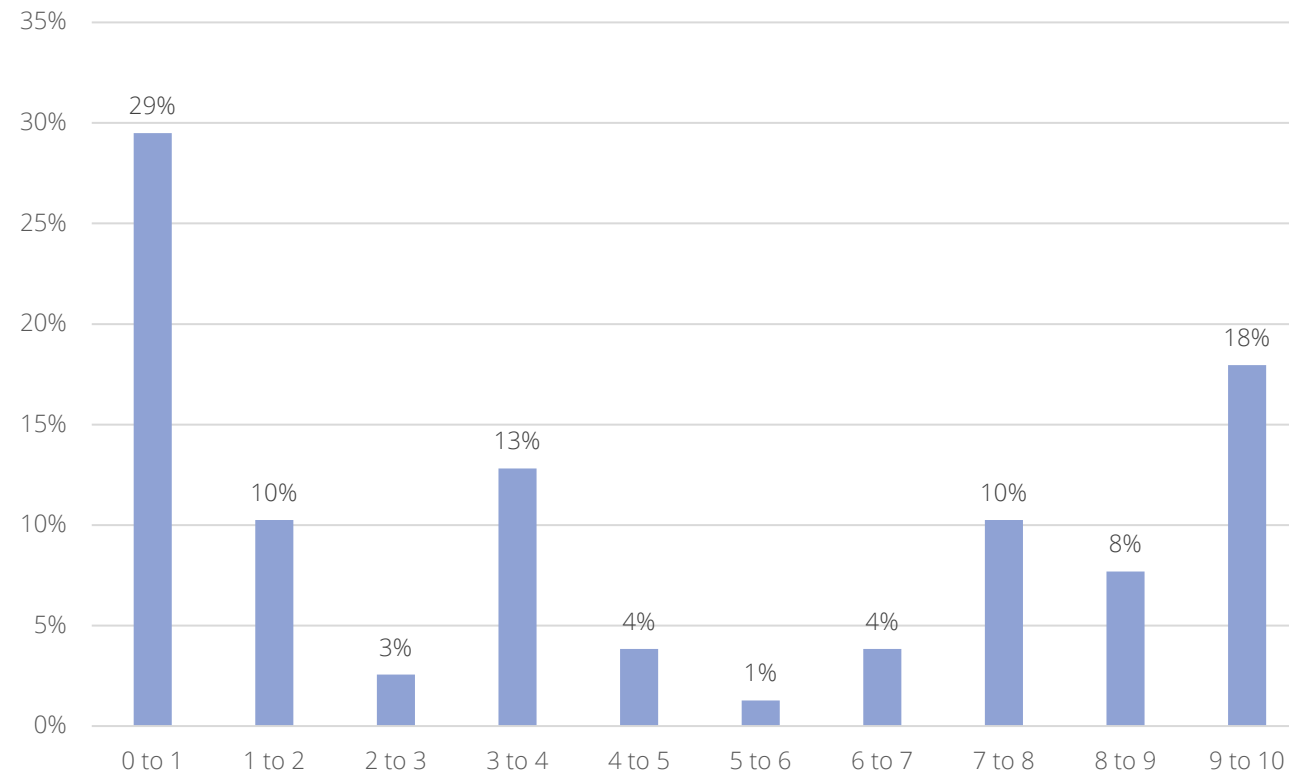
Provide more options for older residents to downsize and stay in the community



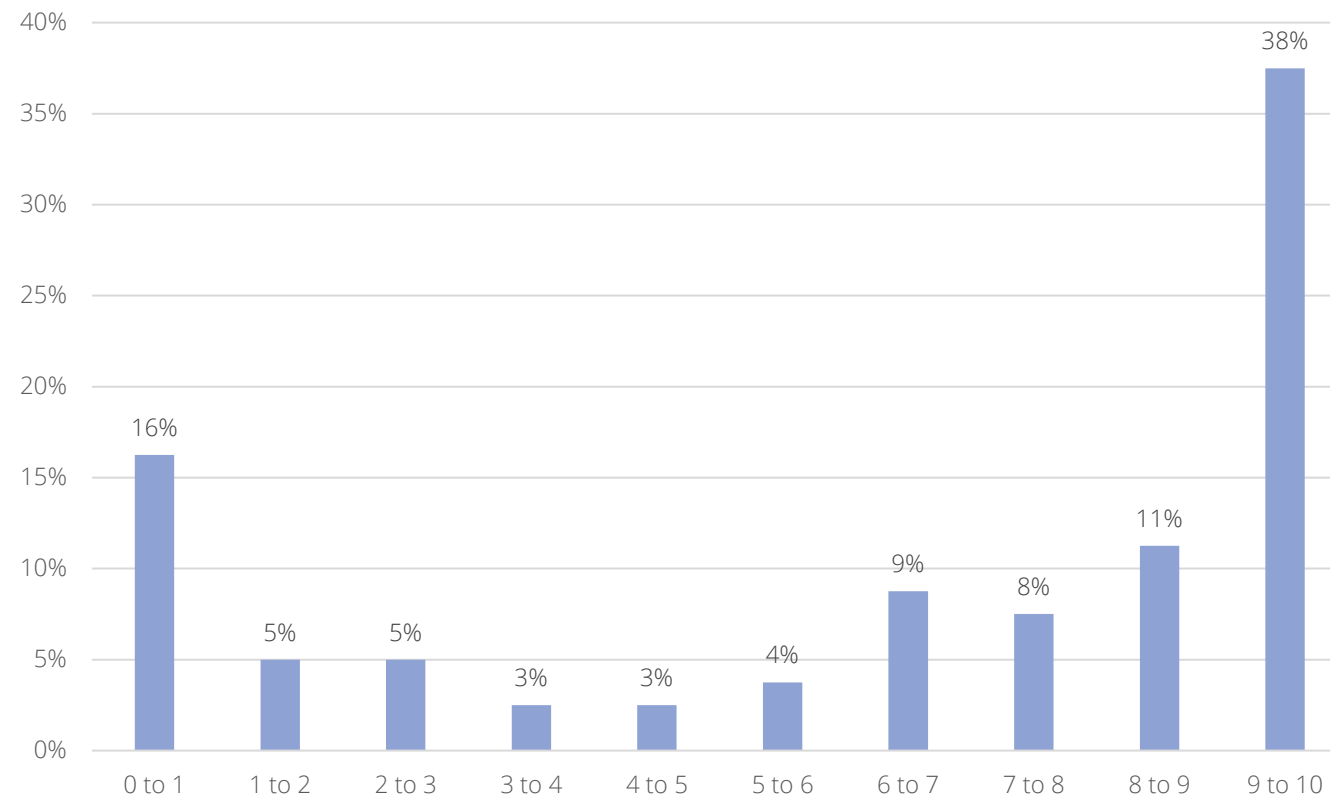
Support local businesses by concentrating new housing and residents around commercial services and community destinations



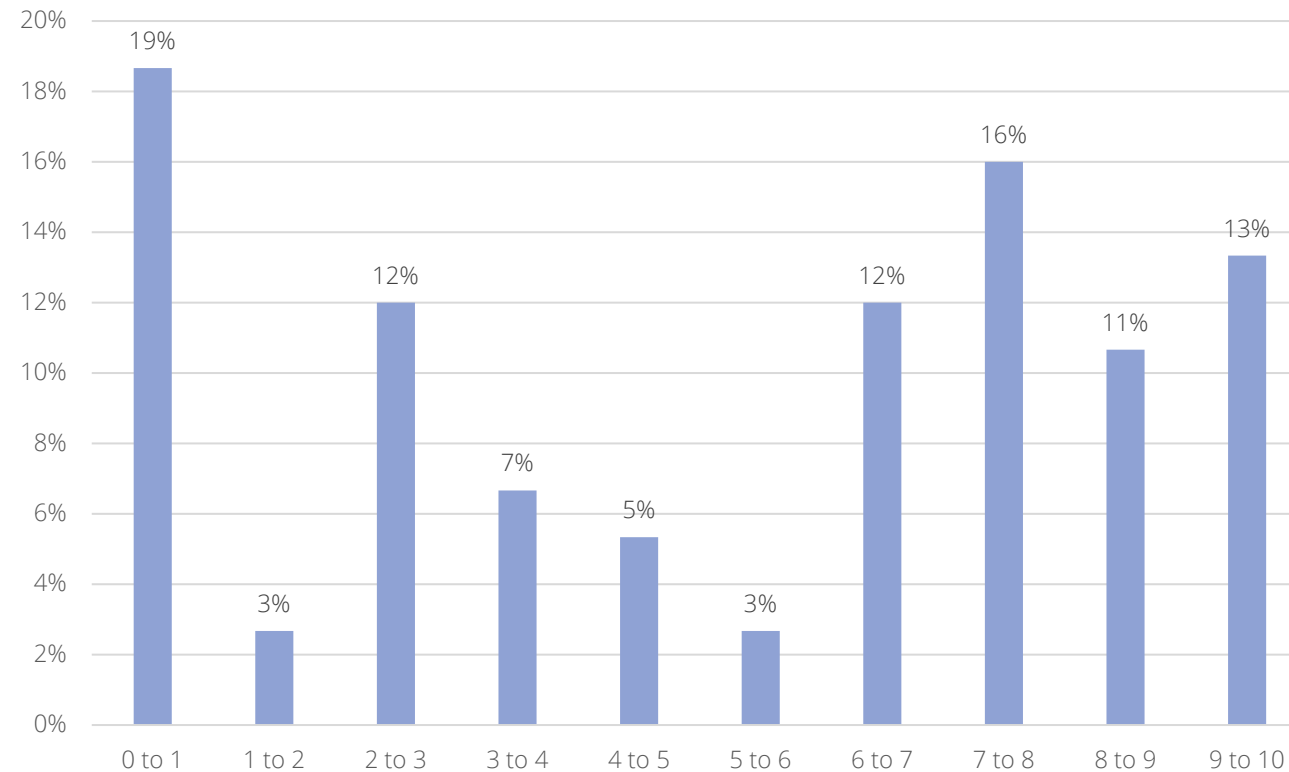
Streamline the process for new housing construction



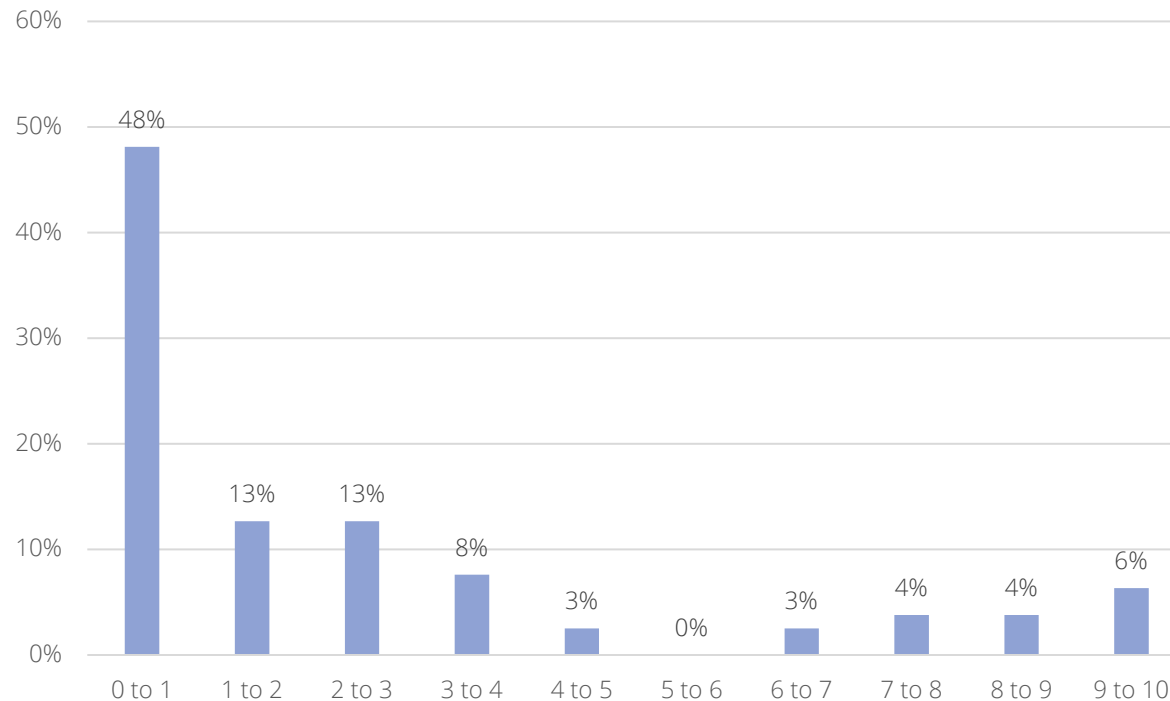
Support homeowners who want to build Accessory Dwelling Units or in-law units on single-family lots



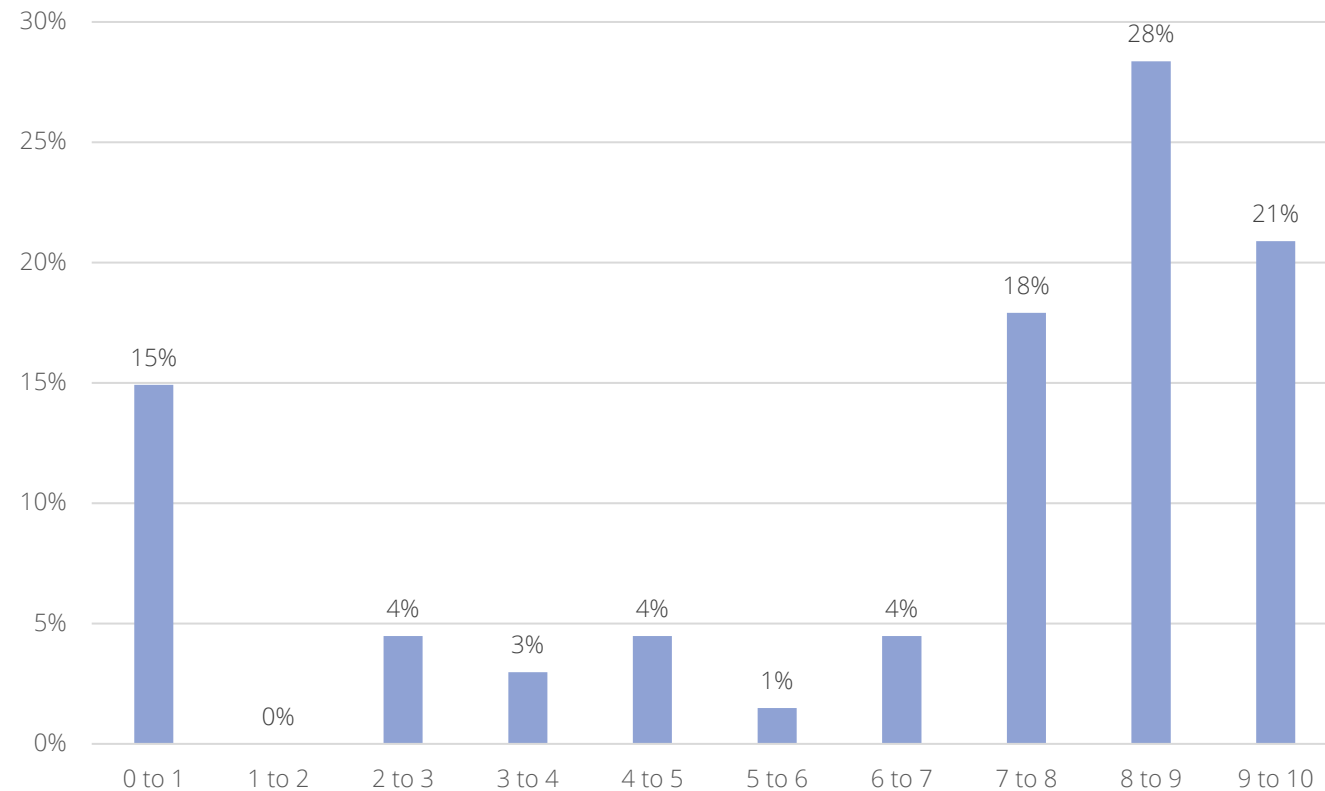
Establish housing for seniors, large families, veterans, and/or persons with disabilities



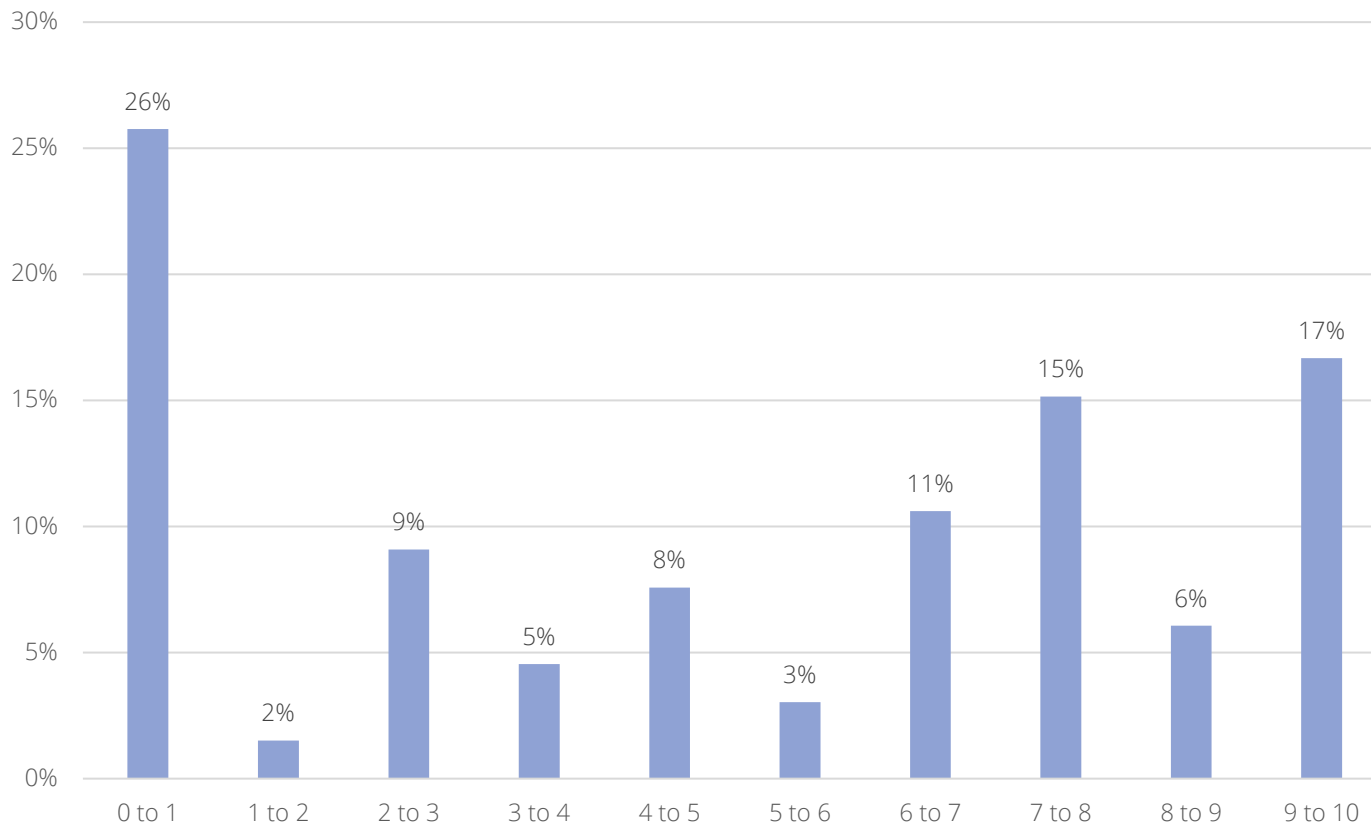
Provide shelters and transitional housing for homeless families and individuals, along with services that help move people into permanent housing



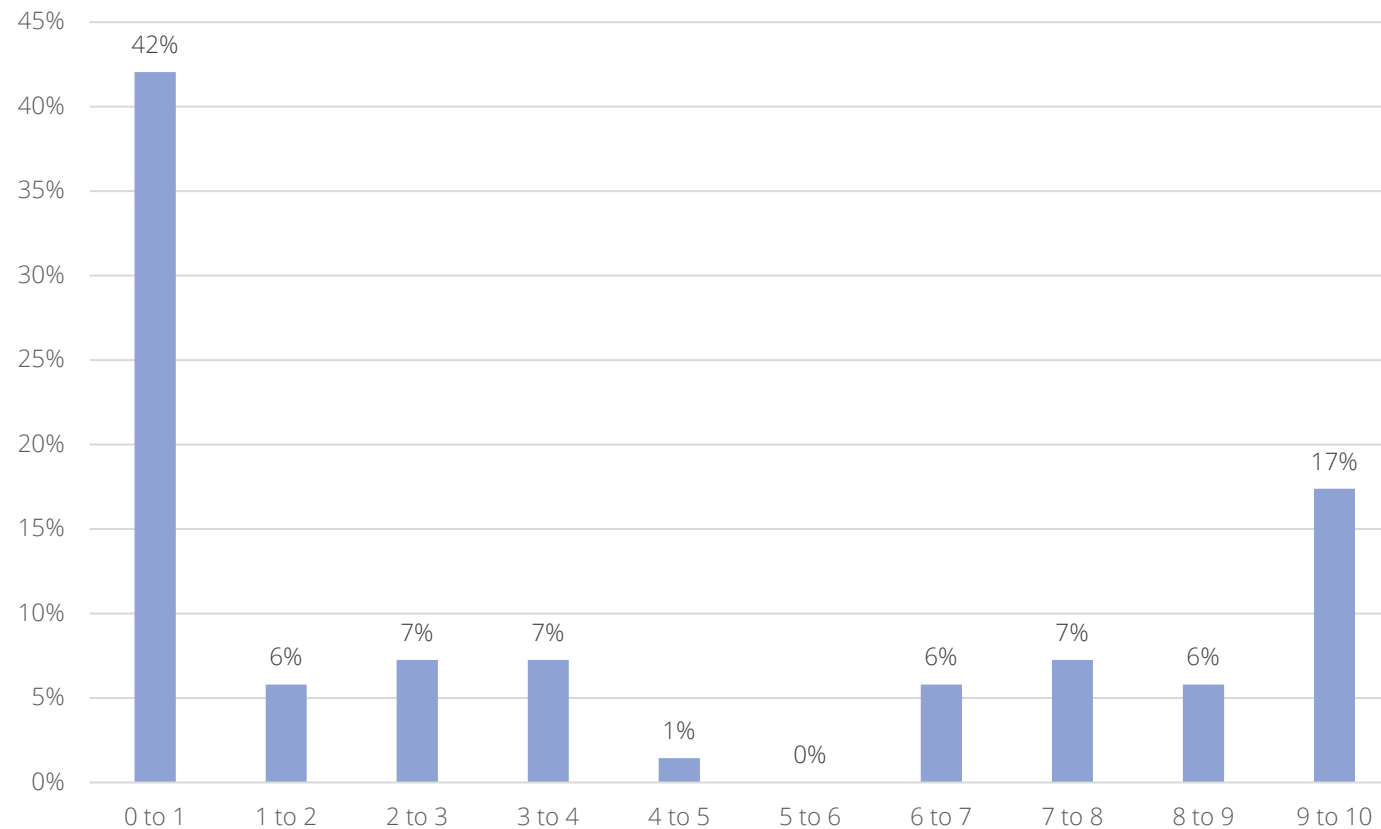
Encourage the rehabilitation of existing housing in older neighborhoods



Support programs to help homeowners at risk of mortgage default to keep their homes



Target efforts to address long-term inequities in the housing market, including discrimination in renting

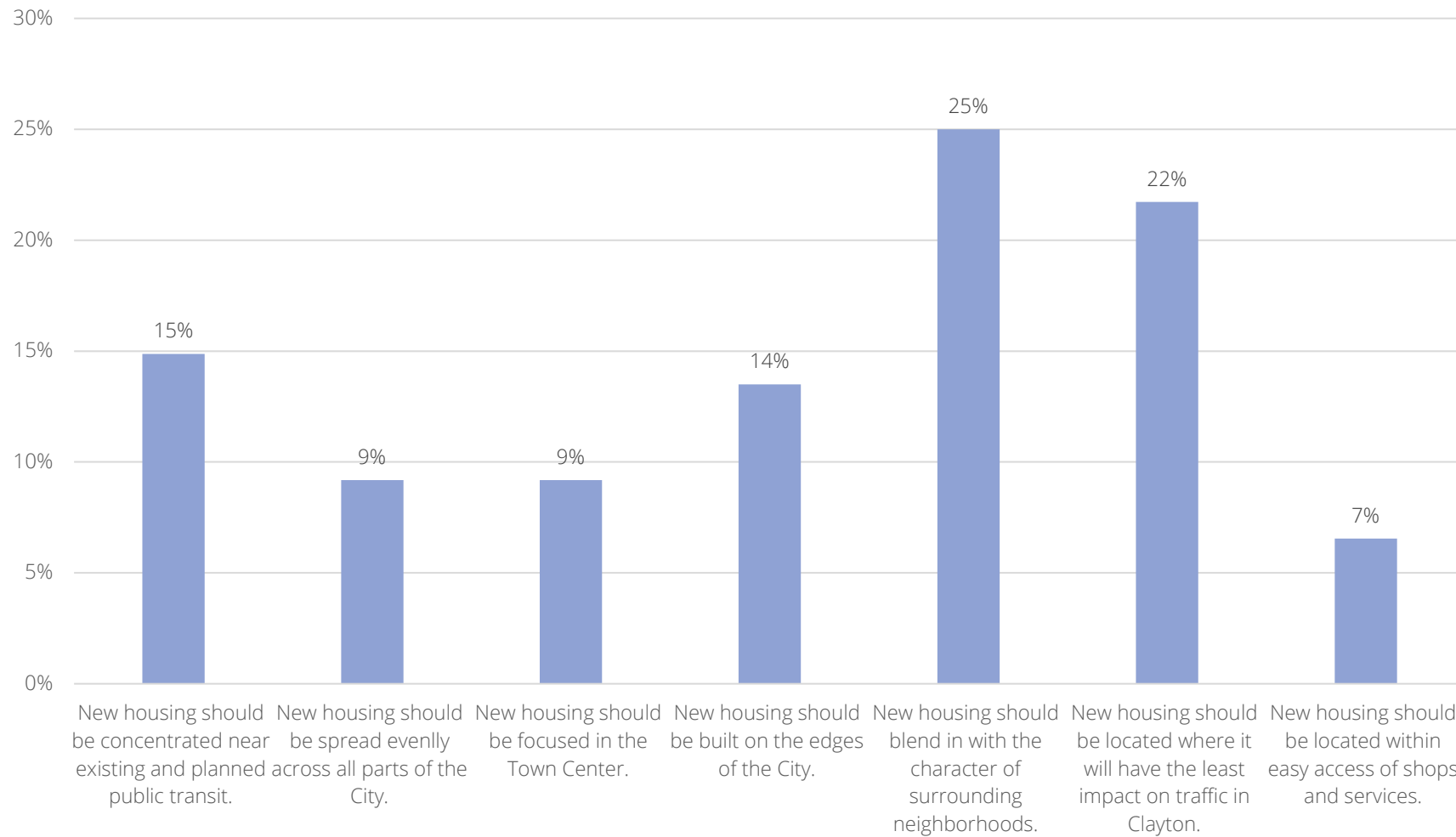


Tradeoffs



In selecting housing strategies, the Housing Element will need to identify priorities and make tradeoffs. You've been given \$100 to spend on the housing strategies listed below. Please identify your preferred strategies by spending your \$100. You can spend the \$100 however you choose (in \$10 increments) across the options below.

You've been given \$100 to spend on the housing strategies listed below. Please identify your preferred strategies by spending your \$100.



CITY OF CLAYTON SIXTH CYCLE HOUSING ELEMENT

Maptionnaire Survey Results

December 21, 2021

