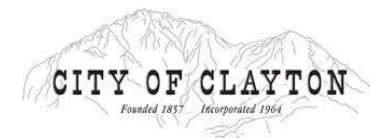


CITY OF CLAYTON SIXTH CYCLE HOUSING ELEMENT

Community Workshop #1

October 20, 2021



Team Introductions

- **Dana Ayers**, Community Development Director, Clayton
- **Reina Schwartz**, City Manager, Clayton
- **Ellie Fiore**, Project Manager, MIG, Inc.
- **Laura Stetson**, Principal, MIG, Inc.
- **Jessie Hernandez**, Project Associate, MIG, Inc.
- **Phoenix Alfaro**, Project Associate, MIG, Inc.



Workshop Agenda

- Welcome and Overview
- Live Polling
- Housing Element Overview
- Local Housing Needs
- Interactive Discussion with Real-time Recording
- Next Steps and Closing Comments

Mentimeter

Please go to **www.menti.com** and use the code **8538 2990** to vote.

Or use your smartphone or tablet camera with the QR code.



SCAN ME

HOUSING ELEMENT OVERVIEW



Housing Element Legislative Intent

“The availability of housing is of **vital statewide importance**...[and] local and state governments have a responsibility to...facilitate the **improvement and development of housing** to make adequate provision for the **housing needs of all economic segments of the community.**”

Why Address Housing Needs

- Discuss how City will address **changing needs for housing**
- Have a community conversation about how to address **local housing challenges**
- Identify strategies to **balance community character** and **accommodate growth**



About the Housing Element

- Must be updated every **8 years**
- Sets numeric **housing goals**
- Identifies **locations** for new housing
- **State review required** by California Housing and Community Development Department (HCD)
- **Adoption deadline:** January 2023
- Non-compliance has **consequences**



Housing Element Contents



OUR HOUSING NEEDS



Statewide and Regional Housing Needs

- Regional Housing Needs Allocation (RHNA): **identifies the housing need** in every California jurisdiction
- Every jurisdiction is **required to plan and zone lands** for its RHNA
- The RHNA is **NOT** a construction obligation



Clayton's 2023 – 2031 RHNA

Allocated by income categories

- Very Low – Up to 50% of Area Median Income (AMI)
- Low – 51 to 80% of AMI
- Moderate – 81 to 120% of AMI
- Above Moderate – 120%+ of AMI

AMI (Average Median Income for Contra Costa, 2020)

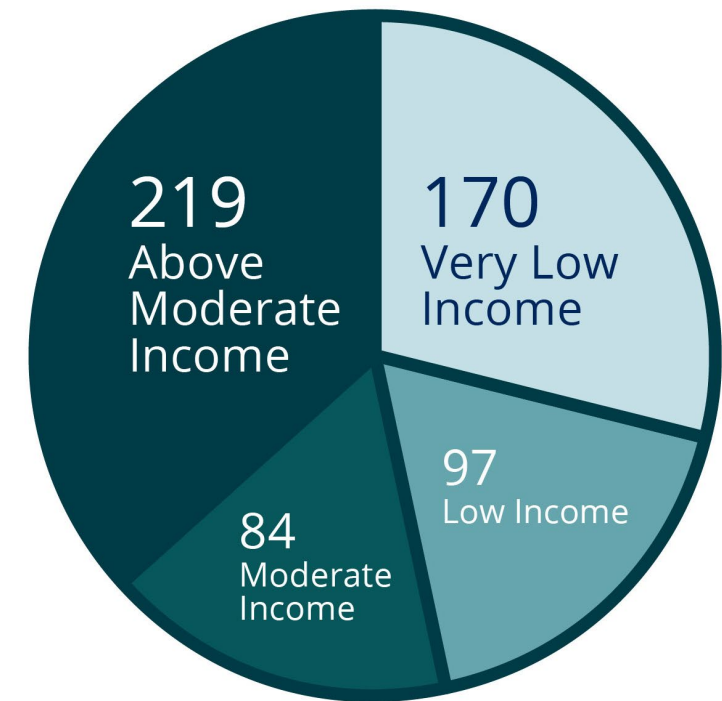
1-person household = \$83,450

2-person household = \$95,350

3-person household = \$107,300

4-person household = \$119,200

Planning for 570 New Homes *Over the Next 8 Years*

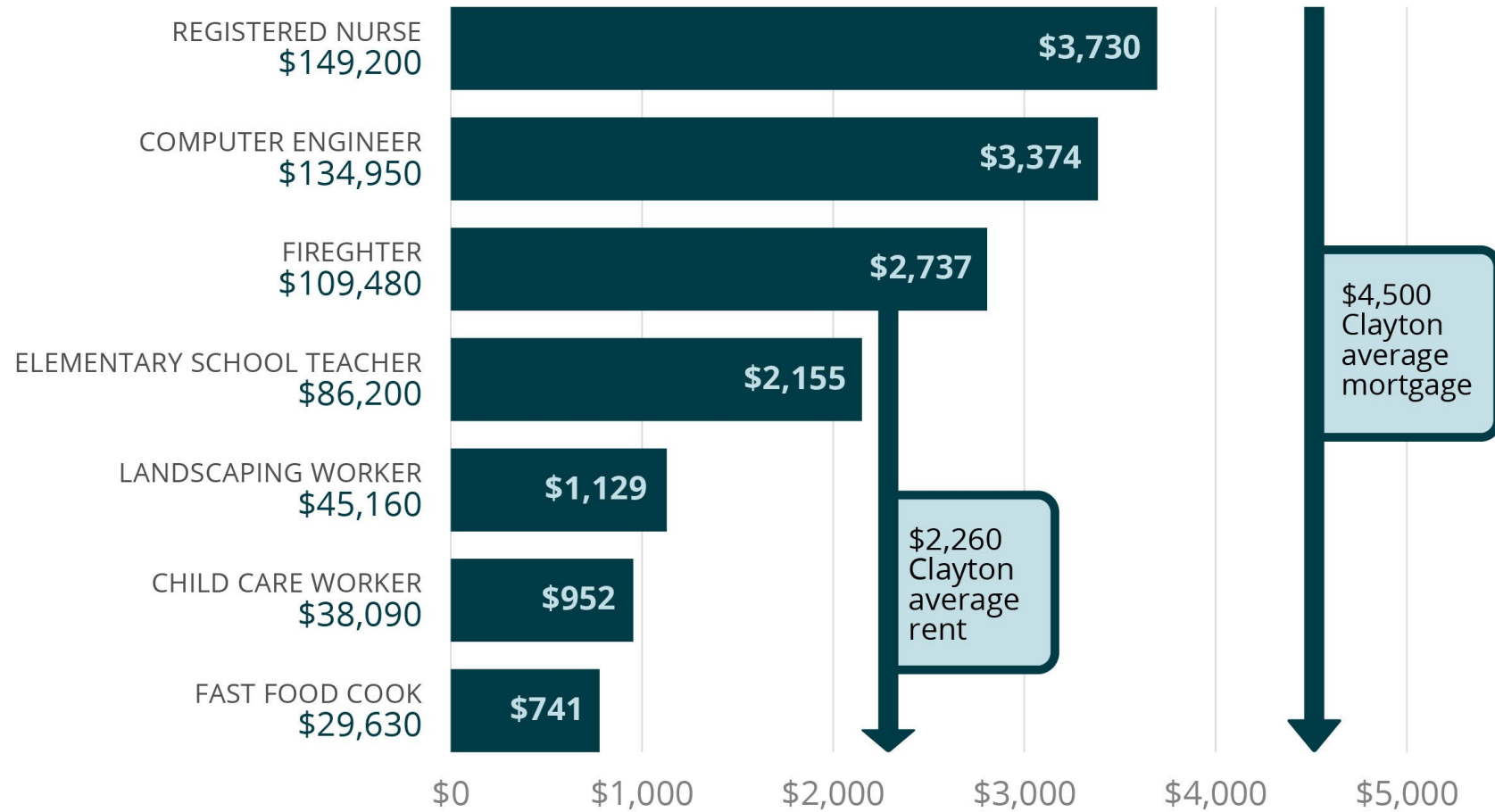


What is Affordable Housing

- **Affordable housing:** when a household pays no more than 30% of its annual income on housing
- **Cost burden:** when monthly housing costs (including utilities) exceed 30% of monthly income
- **27.9% of Clayton households** experienced housing cost burden in 2017



Who Can Afford Housing in Clayton?



Sources: U.S Bureau of Labor Statistics. 2015 - 2019 American Community Survey data. Mortgage estimate based on December 2020 median home price of \$1,089,990, 20% down payment, and 30-year mortgage.

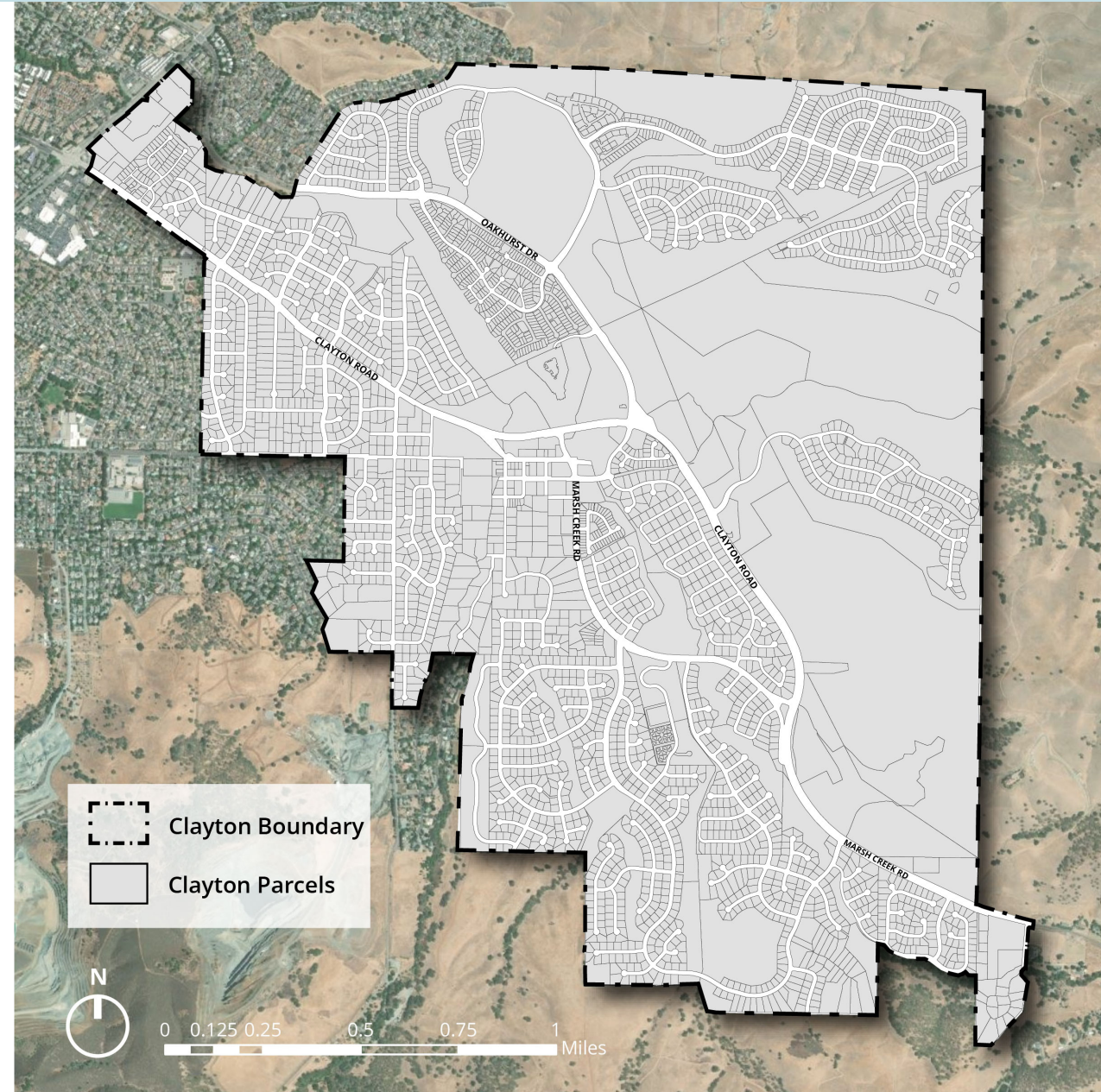
Potential Housing Strategies

- Make it easier and more affordable to build **ADUs**
- Put **residential above retail or commercial uses** in Town Center
- Encourage “**missing middle**” housing types such as townhomes, cottage clusters, etc.



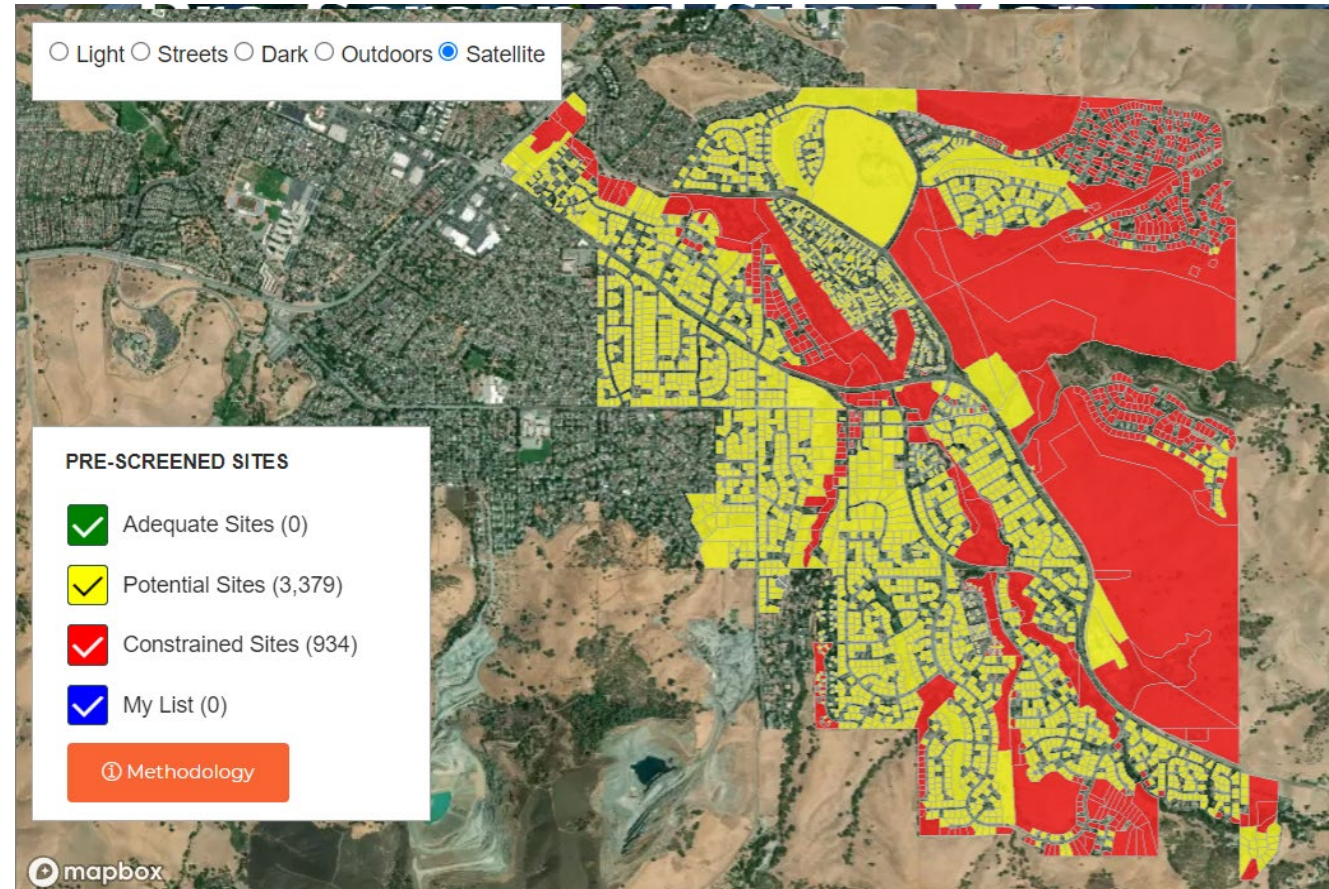
Initial Site Assessment

Clayton is largely built out with little vacant, unconstrained land available for development



Initial Site Assessment

- “Adequate sites” are available and suitable
- Not enough sites?
 - Environmentally constrained sites – geologic hazards, parks, etc.
 - Must adopt program actions to “make sites available” with appropriate zoning and standards



Downtown Property Project

- The City is inviting community input on the best use of the Downtown City-owned property
- The site was an opportunity site listed in the previous Housing Element
- Input opportunities will be combined with Housing Element activities
- Photo-sourcing activity will be included in online survey



DISCUSSION



Discussion Format

- Comments will be documented in real-time using a digital white board
- Please raise your hand or dial *9 to ask to speak
- If you are unable or do not wish to speak, we can capture your questions in the Q&A

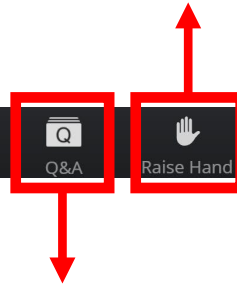


Zoom Instructions

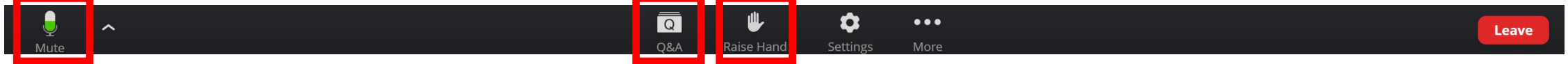
2. AUDIO:
Host will unmute
you



1. RAISE HAND:
Request to
speak



or Q&A:
Type in
questions

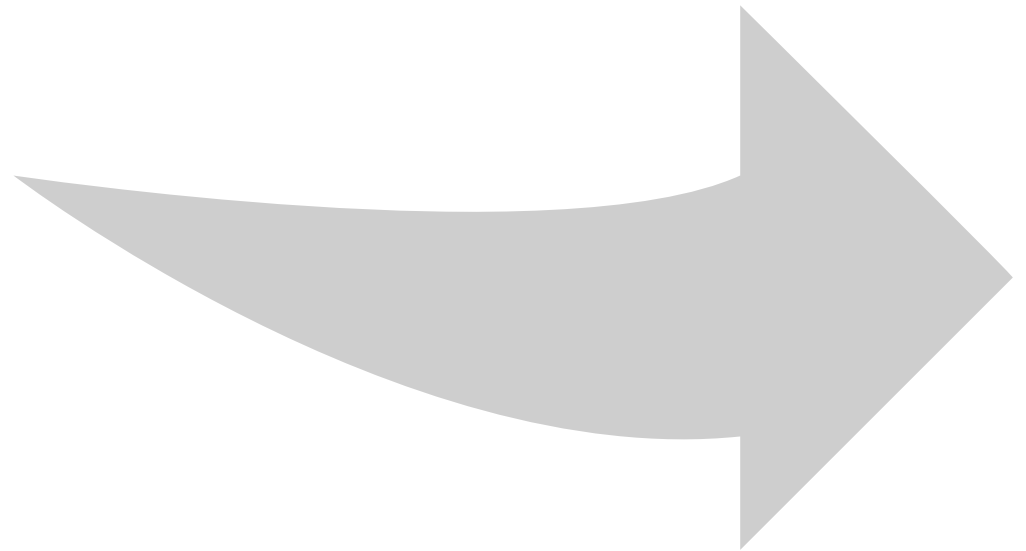


Discussion Questions

1. What are your overall vision and goals for Clayton?
2. What types of housing are needed in the community?
3. Where could new housing be located in Clayton?



Next Steps





For more information, please visit:
bit.ly/clayton-housing-element

**To submit your questions or
comments, please email:**
housingelement@claytonca.gov