

City of Clayton

Trails and Landscape Committee

Annual Report 2013-2014



Message from the Chair:

The Trails and Landscape Committee has essentially remained the same for fiscal year 2013 - 2014 with the exception of one member who had to step down for health reasons and the addition of a new member. I would like to thank Don Fitzgerald for his contributions while serving on the TLC committee and wish him well. I'm pleased to announce Howard Glazer as a new addition to the TLC this year!

The current members have provided meaningful contributions to the TLC. I'm looking forward to working with the current committee members along with Laura Hoffmeister and Mark Janney to ensure that we all execute on our commitments to the TLC going forward!

While several maintenance initiatives were addressed by the end of fiscal year 2013/2014, we were not able to undertake the Keller Ridge Drive or the Jeffry Ranch landscape projects due to the lingering drought conditions; however, the fire prevention tree and shrub trimming and the installation of a central computer and communication project for the city landscape irrigation district was completed. Field irrigation controllers have begun to be installed as funds allow. Given the large number of filed controllers, the replacements are planned to occur over many years. These upgrades allow the system to communicate wireless via computer controller in the Maintenance Office thus reducing staff time to manual turn on/off and adjust irrigation controls in the field. This will allow for their time to be redirected to additional needs. Additional staff time was spent monitoring and adjusting to the ongoing low rainfall. Let's hope this winter brings much needed rainfall to Clayton and the surrounding communities or the drought situation will go from bad to worse!

The following Annual Report is for the 2013 – 2014 fiscal year. This report contains a detailed account of the expenditures of revenues collected by Measure B. All revenue collected by this measure is used on the Landscape maintenance District (LMD). Measure B required the formation of a Citizen Oversight Board to assure that Measure B funds are being utilized for their intended purpose. The Citizen Oversight Committee is made up of citizens of Clayton that are appointed by the City Council to serve two year terms. The committee will advise the council on LMD projects and maintenance reports review & submit recommendations on future budgets and present an annual report for use by the Council and the citizens of Clayton.

We will continue our emphasis on the Adopt-A-Trail program in FY 2014-2015. Thanks to the Clayton Business and Community Association (CBCA) for becoming our most recent trail sponsor! I would like to thank Ted Sudderth for his efforts to take the lead on this program. This program is designed to attract sponsors (families, individuals or businesses) who either make an annual financial pledge and/or a commitment to supply a work group to augment the efforts of the maintenance staff with regard to trail maintenance on one of eleven (11) trail segments. Posted at the head of each adopted trail is a plaque bearing the name of both the financial and the work-group sponsor. The bi-annual financial sponsorship is \$1,000, while work group sponsorship is \$200.

Regards,

Larry Casagrande

Larry Casagrande, Chair

LANDSCAPE MAINTENANCE DISTRICT CELEBRATES ITS SEVENTH YEAR:

The Citywide Landscape Maintenance District (“District”) ended its Seventh year of operation on June 30, 2014. It operates and maintains the public roadway landscaping and its irrigation system, the trail system, as well as the “Clayton fountain.” It also provides weed abatement and fire breaks in the open spaces. The District does not include any of the city parks/sports fields, the City Hall and Library Landscape , or the downtown Grove Park which are funded by other taxes.

Measure B, passed by voters in June 2007, established a Citizens’ Oversight Committee that is commonly known as the Trails and Landscaping Committee (“TLC”) which advises the City Council and staff on matters concerning the District budget, priorities, and responsibilities. The TLC consists of up to eleven 11 non-paid, volunteer citizens of Clayton and the Vice Mayor who serves as the City Council’s non-voting representative in an ex-officio liaison capacity. The TLC currently meets quarterly to oversee the operation of the District.

2013-2014 TLC MEMBERS:

- Larry Casagrande (Chair)
- Ryan Lowe (Vice Chair)
- Don Fitzgerald
- Howard Glazier
- Alyse Smith
- Robert Erich
- Bob Steiner
- Anthony Chippero
- Harun Simbirdi
- Clayton Smith
- Ted Sudderth
- Hank Strafford (Ex-Officio)



TLC Recommendations, Projects, and Work Product Review 2013-2014

- v' TLC regularly receives and reviews reports on maintenance staff activities see attached City Maintenance Quarterly Report Update covering the periods: 07/01/2013-10/28/2013 and 10/29/2013-06/09/2014.
- v' Re-enforced the committee's commitment to expanding the Adopt-A-Trail program.
- v' Reviewed Incoming and outgoing correspondence between citizens and staff regarding various concerns and observations relating to landscaping and trail issues.
- v' Reviewed and approved the proposed landscape district budget for FY 2013-2014.
- v' Once again, complimented the City Maintenance staff for the commendable job they do in effectively managing the available water supply and the maintaining the entire irrigation system.

ADOPT-A-TRAIL PROGRAM:

The Adopt-a-Trail program continues to improve with TLC members working as volunteers to support the effort. The program aims to:

- Augment financing provided by Measure B ·

Make the trails cleaner

- Celebrate the trails' sponsors and volunteers
- Foster civic pride through volunteerism, philanthropy, and cleanliness

The TLC has identified several trail segments for adopt. Each segment can have two adopters: a financial adopter and clean-up adopter.

Please see the APPENDIX section of this report for a current listing of adopters.

TLC RECOMMENDS BUDGET FOR FISCAL YEAR 2013-2014 TO CITY COUNCIL:

The TLC submitted a proposed budget to the City Council, which was based on the existing FY 2013-2014 assessment, subject to adjustment by the Consumer Price Index (CPI), but capped to a 3% maximum increase per Measure B. Subsequently, the CPI was published at an increase of 2.1% and in July 2012, the City Council adopted a total annual assessment of \$955,711 encompassing all residential parcels or non-residential parcel acre. *A copy of the adopted budget and further explanation of Fund 210 is included in the APPENDIX section of this report.*

COMMUNITY OUTREACH:

Both the TLC and the District continue to reach out to the public to keep citizens informed of their activities in a variety of ways, which include:

- Inviting the public to attend quarterly TLC meetings
- Requesting comments and questions via email to cityinfo@ci.clayton.ca.us
- Posting meeting minutes at the City website at www.ci.clayton.ca.us
- Presenting summaries of TLC meetings at City Council meetings
- Publishing quarterly reports of maintenance staff activities
- Submitting articles about the District to the Clayton Pioneer newspaper

[Thanks to the Clayton Pioneer newspaper for publishing articles about the activities relating to Clayton's trails and landscaping. The articles, which appeared during the last fiscal year, are included in the ***APPENDIX*** section of this report].

APPENDIX

- 2013-2014 Budget
- City Wide Landscaping Maintenance District Fund No. 210
- City Maintenance Quarterly Report(s) - Trails and Landscaping
- Adopt a Trail Sponsors
- Trails and Landscape Committee Informational brochure

City of Clayton
 Landscape Mtn District CFD 2007-1 Fund 210
 Adopted Budget 13-14

Account Number	Account Name	2011-12 Actual	2012-13 Adopted Budget	2012-13 Actual 6/26/2013	2012-13 Projected 6/30/2013	2013-14 Adopted Budget
7111	Salaries/Regular	174,096	162,632	168,353	168,353	162,632
7112	Temporary Help	91,799	94,150	69,573	69,573	94,150
7113	Overtime	-	-	67	67	-
7218	LTD Insurance	1,017	1,138	1,162	1,162	1,374
7220	PERS Retirement	35,847	36,868	38,303	38,303	40,784
7231	Workers Comp Insurance	61	9,966	7,416	7,416	9,966
7232	Unemployment Insurance	5,938	5,449	5,449	5,449	5,449
7233	FICA and Medicare	8,178	9,561	6,943	6,943	9,561
7246	Benefit Insurance	34,012	31,175	32,009	32,009	35,611
7311	General Supplies	31,474	43,000	31,306	33,000	43,000
7316	Landscape Replacement Material	1,063	20,000	3,498	20,000	20,000
7327	Street Maint. Supplies	395	-	-	-	-
7335	Gas & Electric Serv.	25,751	25,000	25,942	25,942	25,000
7338	Water Service	109,620	180,000	153,281	180,000	180,000
7342	Machinery/ Equip Maint.	9,619	9,500	10,289	10,289	10,000
7343	Vehicle Maintenance	12,328	12,000	4,480	4,480	12,000
7344	Vehicle Gas, Oil, and Supplies	12,591	10,500	9,929	10,000	10,500
7381	Property Tax Admin Cost	3,734	3,737	3,548	3,737	3,737
7389	Misc. Expenses	-	-	80	80	-
7412	Engineering Inspection	1,423	-	-	-	1,430
7419	Other Prof. Services	116,269	156,555	110,409	160,025	163,355
7486	CERF Charges/Depreciation	13,500	13,500	13,500	13,500	13,500
7520	Project/Program costs	256,576	102,500	379,930	379,930	82,900
7615	Property Taxes	2,398	2,398	2,447	2,447	2,893
8101	Transfer to General Fund	30,756	31,402	31,402	31,402	32,156
8113	Transfer to Stormwater Fund		-	456	456	-
	Total Expenses	978,443	961,031	1,109,773	1,204,563	959,998

4604	Clayton LMD Assessment	935,850	955,711	906,969	954,704	978,034
5601	Interest	16,556	5,000	9,371	9,371	4,000
5702	Donations/Contributions			250	250	-
5606	Unrealized Inv Gain/Loss					
	Total Revenue	955,132	960,711	916,589	964,325	982,034
	Annual Balance (Shortfall)	(23,311)	(320)	(193,183)	(240,238)	22,036
	Beginning Fund Balance	535,556	512,245	512,245	512,245	272,007
	Ending Fund Balance	512,245	511,925	319,062	272,007	294,043

Account Number	Account Name	2011-12 Actual 6/30/2012	2012-13 Adopted Budget	2012-13 Actual 6/25/2013	2012-13 Projected 6/30/2013	2013-14 Adopted Budget
7419	Wildland Resource Mgmt	46,550	1,600	5,900	5,900	-
	Environtech Enterprises	44,708	53,416	21,999	53,416	59,000
	Permco - RFQ Noxious Weed Abatement	-	-	4,838	4,838	-
	Waraner Brothers -Tree trimming	15,300	15,000	14,650	14,650	25,000
	Waraner Bros Svc 1 x per yr+2 x trails	30,385	35,000	29,500	35,000	30,385
	NBS Admin Fees+Del letters	3,868	3,800	3,744	3,824	3,800
	Martel Water Systems	475	1,000	-	1,000	-
	Rodent Control	8,151	7,500	4,800	7,500	9,500
	Advertising for TEMP labor/Live Scans	146	2,000	512	2,000	2,000
	Sprayer Sales Company (ww treatment)	-	2,241	1,483	2,241	2,241
	Water Feature Extra + repair contingency	1,157	5,000	13,625	13,625	5,000
	Water Feature \$650x12 (maintenance)	7,800	7,800	7,150	7,800	8,000
	Sub Division/City Entry Signs	-	8,000	1,976	8,000	4,000
	Daffodil Hill Landscape Mtn Supplies/water	-	12,830	-	-	12,830
	CCC Fire Protection - Operation Permit	-	-	231	231	231
	EBRCSA-Radio Mtn PW radio's	-	1,368	-	-	1,368
	Total	158,540	156,555	110,409	160,025	163,355
7311	Herbicides		16,000			16,000
	Fertilizer		7,000			7,000
	Irrigation		15,000			15,000
	Misc Supplies		5,000			5,000
			43,000	31,306	33,000	43,000
7520	Reserve Projects					
	Trail Resurface - Bruce Lee Trail \$50k		50,000		50,000	
	Trail Crack sealing/repair \$10k		10,000		10,000	
	CL Rd Median/Roadway Re-Landscape \$328,011k		181,900		328,011	
	Irrigation Central Controller System \$30k		30,000		30,000	
	Tree Replacement Trimming \$10k		10,000		10,000	
	Jeffrey Ranch Relandscaping \$2.5K		2,500		2,500	
	Keller Ridge Tree Replacement \$16.6K		16,600		16,600	
	Open Space Fire Prevention Tree/Shrub Trim (one time)					30,000
	Keller Ridge Landscaping					29,400
	Jeffrey Ranch Relandscaping					3,500
	Replace Irrigation Central Control Field Panel					20,000
	Daffodil Hill \$29k		29,000		29,000	
			330,000	11,329	476,111	82,900

Extra to run pump for fountain
10 events (31 days @ \$160=\$4960.)
Art n Wine, Memorial Day, 4th of July, Halloween Parade/Ghost Walk, Veterans Day, Xmas Tree Lighting,
Presidents Day, Thanksgiving, Garden Tours, Oktoberfest

B. Citywide Landscape Maintenance District – Fund No. 210

In June 2007, Clayton voters approved a replacement real property special tax to continue funding the operation and maintenance of their citywide public landscaped areas. This annual tax is restricted to costs associated with: arterial and specified roadway medians and parkways, the trails system, the annual open space noxious weed abatement in Oakhurst hills, the annual open space and trails weed abatement for fire and public safety, landscape and turf irrigation and the monthly maintenance and special occasion/holiday operation of the "Clayton Fountain".

Maintenance of City Parks *is not* included as an authorized expense under the District's Act; park maintenance obligations fall to the City's General Fund. *Citywide public landscaping services have always been funded by a special revenue tax levied on private properties throughout the City.* The District is completed its 6th year of a 10-year approved operation (Measure B), and its citizens' oversight committee (Trails and Landscaping Committee, or TLC) meets periodically to ensure the promised maintenance standards and efficiencies are achieved with these special-purpose tax revenues.

Pursuant to the terms of voter-approved Measure B, the special tax rate may be modified annually by the change in the Consumer Price Index (CPI; San Francisco – Bay Area) from April to April. In no event shall the tax rate be increased by more than 3% each year. The CPI change (from April 2012 to April 2013) posted at 2.38%. The District's revenue projection has been increased by that factor accordingly and is set at a total of \$978,034 for FY 2013-14, an annual increase of \$23,330. Adding interest earnings of \$4,000 pushes the total revenue budget to \$982,034. Pursuant to its oversight charge, the citizens' TLC considered the CPI fluctuation and the District's tentative budget at its meeting on May 20th and adopted a motion to recommend the City Council implement the full 2.38% CPI annual rate adjustment.

The Landscape Maintenance District aggressively installed a host of beautification improvements to the City's roadway landscaping over the course of the past three (3) years. An accounting of the District's activities and improvements included appropriations from the District's reserves in May 2010 (\$260,000) and led last year to the final completion of the Daffodil Hill Beautification Project (\$47,500 total; \$29,000 in Landscape District monies), funded jointly with the Clayton Business and Community Foundation (CBCA), along with \$50,000 worth of Trail System repaving in conjunction with the City's 2013 Neighborhood Street Rehabilitation Project. The April 2013 trail repaving addressed 10,000 sq. ft. on the Mt. Diablo Creek Trail (from Center Street to Grenache Circle), and 1,750 l.f. along the Donner Creek Trail adjacent to El Molino Drive, south of old Marsh Creek Road.

With the District investing almost \$750,000 in public landscape improvements, irrigation and Trail systems upgrades over the last three (3) years, the equity reserves of the District have been appropriately drawn down. Understandably then, the citizens' Trails and Landscaping Committee as well as City staff agree the District's improvement projects should be slightly curtailed this coming fiscal year in order to replenish the reserves for another large landscape project push. The Trails and Landscaping Committee at its last meeting also adopted priority emphasis that the next sequence of District improvements should concentrate on upgrading the District's [City's] Trail System. For now it is recommended only \$82,900 be expended in FY 2013-14 in District funds for the following capital improvements:

Open Space fire prevention tree and shrub trimming:	\$ 30,000
Keller Ridge Drive landscaping improvements:	\$ 29,400
Replace Irrigation System central control field panel:	\$ 20,000
Re-Landscape the Jeffrey Ranch median island:	\$ 3,500
Total:	\$ 82,900

The installation and commencement of these significant landscape restoration and District improvement projects demonstrate the District's success in managing the voter's preference for a "pay-as-you-go" ballot tax measure of capital improvements. The defeated Measure "O" (2005) would have issued a revenue bond in its initial year to attack the public improvements sooner but conservative Clayton voters frowned on the higher annual assessment and bonded indebtedness to be shouldered by the District. Entering the District's 7th year of operation still allows the accumulation of modest reserves to accomplish many of the planned objectives, just at a slightly later time than some might have wished.

Noteworthy expenses of the District include its annual weed abatement District-wide (\$30,385; to be done before commencement of the official fire season), and the mounting expense of \$59,000 to abate noxious and exotic weeds in the Oakhurst Hills

(a condition of project approval for the Oakhurst residential development). Metered water service remains constant at its historical expense of \$180,000 per year knowing full well it can fluctuate wildly depending on seasonal climates and strange weather patterns. However, as new landscaping improvements are installed, each is accompanied by irrigation system upgrades with greater efficiencies in water application, which temper this expense allocation and cause operational savings.

Personnel services for this labor-intensive work effort account for 37.5% of the District's budget this year (\$359,527), down slightly from last year's portion of 40% caused by less labor time being expended after new landscaping and irrigation systems are installed. Whenever possible, tasks within the District are assigned to temporary seasonal personnel that are less expensive labor (e.g. trimming), which shifts the permanent City Maintenance personnel (5) to tasks requiring journeyman-level experiences (e.g. irrigation line and system repairs).

As approved by Measure "B" voters, the District's budget includes an annual expense of \$20,000 (Account 7316) for the purchase of replacement plants. The District further contributes its annual allocation of \$13,500 to the City's Capital Equipment Replacement Fund (CERF), from which Maintenance vehicles and equipment are purchased for use in maintaining the Landscape District. An expense of \$32,156 (3.3% of annual District revenue) is transferred to the City's General Fund to pay for administrative and overhead activities of the City (e.g. telephones; payroll processing; accounts receivable and payable; District direction) attributable to administering the District's annual operations.

With all of these actions, the District's ending fund balance on 30 June 2014 will still be a healthy \$294,043, which equates to a reserve of 30% of its annual tax revenue. The reserve status is confirmation the City does not siphon "surplus" monies of the District into its General Fund but uses the special tax revenues for its intended voter purposes.

MAINTENANCE WORK UPDATE TRAILS & LANDSCAPING

5/20/2013 to 10/28/13

- Spot spray herbicides and pull weeds in the Landscape District Citywide.
- We have started to turn down or off Irrigation systems within the Landscape District. Crews over the summer made major repairs to systems replacing gate valves and control valves. Also constantly replacing and repairing sprinkler heads throughout the Landscape District.
- Continued our semi-annual trimming of the Landscape over the summer in the following areas; Oakhurst Drive Median from City limits to Clayton Road, Clayton Road outbound from Center Street to City Limits, Diablo Parkway, Middle School hillside along Marsh Creek Road, Old Marsh Creek Road from Clayton Road to Easley Drive inbound, Clayton Road inbound from City limits to Mitchell Canyon Road, Atchinson Stage Road, Eagle Peak from Oakhurst Drive to Keller Ridge Drive, along Keller Ridge Drive, in the downtown area at the Post Office pathway, Marsh Creek Road by Plaza, pathway running to the elementary school, pathways running between and in Westwood and Southbrook neighborhoods.
- Had the following area trees trimmed; Median Trees were lifted on Clayton Road from City limits to the Middle School, All the Oak trees going up Peacock Creek Drive were structurally trimmed, Removed three dead pine trees along Mitchell Canyon Road, Lifted trees along trail from Peacock Creek Drive to Middle School, Trimmed a large Oak tree on Main Street by tear drop, removed down limbs and safety trimmed trees along Cardinet Trail by Lydia Lane Park, Safety trimmed trees along Old Marsh Creek Road by Easley Drive.
- Finished the weed abatement in the open space City wide; it was all completed before the start of the Fire season.
- The upgrades to a central control irrigation system continued with the installation of software to run the system. Continue upgrades to the DX controllers located out in the field. Still working out all the bugs in the systems controls with the installer.



MAINTENANCE WORK UPDATE TRAILS & LANDSCAPING

10/28/2013 to 6/9/14

Spot spray herbicides and pull weeds in the Landscape District Citywide.

Maintenance has been turning irrigation systems on Citywide and making repairs to the system. As the systems continue to age crews are finding more repairs from tree roots breaking the mainlines to parts failing from age. Staff is also monitoring usage to achieve the 15% reduction in reduce water usage from historical levels (2005 to 2008) that the Contra Cost Water District has ask customers to achieve.

Continued our semi-annual trimming of the Landscape over the winter in the following areas; Oakhurst Drive from City limits to Indianhead Way, Clayton Road new medians from Center Street to Mitchell Canyon Road, Along Keller Ridge Drive, Along Eagle Peak Drive, Old Marsh Creek Road from Easley Drive to Stranhan subdivision inbound, Clayton Road outbound from Oakhurst Drive to El Camino Drive, in the downtown area at the Post Office pathway and Tear Drop Island, pathway running to the elementary school, Oakhurst Drive from Yolanda to Yolanda outbound, and trimmed all the Crape Myrtles in the Landscape District.

- Had the following area trees trimmed; Three large Eucalyptus trees safety trimmed on Lydia Lane, Lifted Pepper trees on Oakhurst Drive and Marsh Creek Road, Safety trimmed and lifted trees on Clayton Road between off ramp and Marsh Creek Road, Trimmed large Oak on Marsh Creek Road in the Median, Remove dead trees in the median along Clayton Road and Marsh Creek Road (stressed from drought conditions) Remove dead and fallen trees in the Creek by Stranhan subdivision and El Portal Drive.

Finished all the weed abatement in the open space City wide for fire protection; it was all completed on May 30th before the start of the Fire season.

Adopt a Trail updated as of 6/30/14

Adopters/Revenues

<u>Name</u>	<u>Sponsor Type</u>	<u>Trail Section</u>	<u>Amount Recvd</u>	<u>Date \$ Recvd</u>	<u>Ag. recvd</u>	<u>Start Date</u>	<u>Expiration Date</u>
Sudderth Family CBCA	Volunteer Labor	Cardinet Trail (Library - Lydia Ln Pk)	\$200	8/12/2013	Yes	9/1/2013	3/1/2015
	Financial	Cardinet Trail (Library - Lydia Ln Pk)	\$1000	8/12/2013		9/1/2013	3/1/2015
Passport2Clayton (P2C)	Volunteer Labor	Bruce Lee Trail (Upper Easley Trail)	\$200	2/1/2011	Yes	3/1/2011	3/1/2012
	Financial Sponsor	Bruce Lee Trail (Upper Easley Trail)	\$1000	2/1/2011		3/1/2011	3/1/2012
Employees of CD Federal Credit Union Discovery Builders	Volunteer Labor	Blue Oak Trail	\$200	2/9/2011	Yes	3/1/2011	3/1/2012
	Financial Sponsor	Blue Oak Trail	\$1000	2/17/2011		3/1/2011	3/1/2012
Siegel Family Available	Volunteer Labor	Lower Easley Trail	\$250	1/7/2013	Yes	TBD	TBD
	Financial Sponsor	Lower Easley Trail					
Available Available	Volunteer Labor	Cardinet Trail (Lydia Ln Pk - Westwood Pk)					
	Financial Sponsor	Cardinet Trail (Lydia Ln Pk - Westwood Pk)					
Available Available	Volunteer Labor	Donner Creek Trail					
	Financial Sponsor	Donner Creek Trail					

Adopt a Trail Expenses

<u>Date</u>	<u>purpose</u>	<u>Amount</u>
3/8/2009	19.5 hrs maintenance temp labor make/ install signs	\$219.00
4/17/2009	materials for sign posts	\$1527.34
6/23/2009	signs printing (bay area barricade)	\$98.87
6/30/2009	t-shirts	\$289.51
8/9/2009	wood for future sign posts (Dolan's Lumber)	\$595.15
8/9/2009	sign printing (Bay Area Barricade)	\$10.93
5/14/2010	Clayton Pioneer Ad	\$200.00
8/31/2011	sign re-screening	\$10.82
8/31/2011	Signs (Bay Area Barricade)	\$209.35
8/31/2011	27 hrs maintenance reg/temp labor make/install signs	\$1116.80
11/30/2011	Oak tree lights (trail by library)	\$3305.98
11/30/2011	electric wire and parts for oak tree lights (trail by Library)	\$437.00
12/30/2011	17 hrs reg/temp labor install oak tree lights (trail by library)	\$697.00
Additional expenses for latest adopters signs and installation unknown		TBD
Total Expenses to date (NOT including outstanding expenses for latest signs and relocation)		\$8717.75

Donations

Renewal and New as of 6/30/14	\$1450
Prior donations	\$9250
	\$10,700

6/30/2014 **Account Balance:** \$10,700-\$8715.75 = **\$1982.25** (this amount will be reduced based upon outstanding expenses yet to be determined)

CLAYTON'S TRAILS & LANDSCAPE COMMITTEE (TLC)

Formed by the Clayton City Council in August 2007.

Comprised of up to 11 volunteer members of the Clayton community

Helps the city implement the voter-approved plan to manage the current and future needs of the citywide Landscape Maintenance District

Helps to manage and support Clayton's Adopt-A-Trail program



Serves as a financial oversight committee and provides short and long term implementation guidance to city staff and the City Council

The Landscape Maintenance District consists of roadway edge and roadway median landscaping, trail maintenance, and fire abatement on trails and open space (city parks and the Clayton fountain operation are not included in the district)

Funds can only be used for spending within the Landscape Maintenance District

GET INVOLVED!

The Trails and Landscape Committee meets quarterly on the 3rd Monday of the month at 7pm at the Clayton Library

Clayton residents are encouraged to attend these meetings to provide public opinion and ask questions

Meeting agendas are posted online:
City web site at www.ci.clayton.ca.us

Printed copies at:
City Hall, 6000 Heritage Trail;
Clayton Library, 6125 Clayton Road;
Ohm's Bulletin Board, 1028 Diablo St

Please direct any questions or concerns to the City of Clayton via the website or address above



2014 Trails & Landscape Committee Members

Larry Casagrande (chair)	Harun Simbirdi
Ryan Lowe (Vice Chair)	Alyse Smith
A.J. Chippero	Clayton Smith
Robert Erich	Bob Steiner
Don Fitzgerald	Ted Sudderth
Howard Glazier	



Trails & Landscape

2014

THE LANDSCAPE MAINTENANCE DISTRICT: CLAYTON'S "FRONT YARD"

The Landscape Maintenance District covers:

- over 2 million square feet of landscape
- 40,700 square feet of lawns and flowerbeds
- Almost 3,000 city trees
- 515 acres of open space
- 7 miles of creek side trails
- 20 miles of open space trails
- Approximately 50 street islands and medians

The District uses the equivalent of only three full-time staff along with seasonal and volunteer workers.

HOW IS THE DISTRICT FUNDED?

Measure B, a special 10-year special parcel tax passed by Clayton voters in June 2007 funds the District.

Measure B is the only source of funding for the Landscape District supplies, electricity, irrigation, water, and labor.

Funds may only be used for voter approved Landscape District expenses.

Trails & Landscape Committee

ADOPT-A-TRAIL

If you are one of the many Clayton residents that enjoy our trail system you can further help the Landscape Maintenance District and beautify Clayton's trails by Adopting a Trail.

This program aims to:

- Augment financing provided by Measure B
- Provide a venue for volunteers that help Clayton maintain and enhance its trail network
- Make the trails cleaner
- Celebrate the sponsors and volunteers that help Clayton keep the trail network one of the distinguishing characteristics of our community
- Foster civic pride through volunteerism, philanthropy, and cleanliness

If you are interested in participating in this program or would like additional information please contact Ted Sudderth at united@aol.com

TLC's STRATEGIC FOCUS

- Remove unwanted expenditures and control costs with strict oversight
- Create equity in the District
- Implement cost effective measures to improve irrigation and infrastructure
- Invest in modern equipment to increase maintenance efficiency and effectiveness
- Implement seasonal and situational based labor to minimize costs

STANDARDS & PRIORITIES FOR THE DISTRICT

- Mandatory firebreaks
- Weeds trimmed along major trails and creeks twice a year
- Trees trimmed for safety purposes
- Irrigation breaks repaired as necessary
- Public roadway landscaping trimmed twice a year
- Landscape areas fertilized once a year as necessary

CITY OF CLAYTON

CLAYTON PIONEER - July 26, 2013

Letters to the Editor

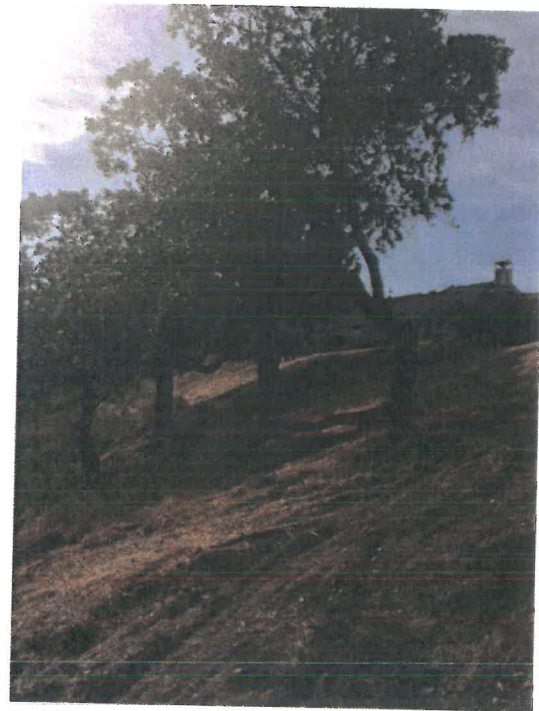
Kudos to city

It occurred to me while I was walking on one of our fabulous trails that someone needs to be thanked for all the "mowing" of the weeds etc. that need constant maintenance. I was watching the guys who were trimming the trees along Clayton Road and wondering if they ever get the thanks they deserve. And a big shout-out to the people who drive the street sweepers and pick up our garbage! Thanks to all of you who make Clayton the best place in the world to live! You are appreciated!

Alexandria Lafferty



Before Trimming – behind Miwok Dr. and Blue Oak Dr. area



After Trimming – behind Miwok Dr. and Blue Oak Dr. area